

# Start Here ▾ ▾

**⚠ Do not connect the HD65U until you install the driver from the CD and are instructed to do so. Otherwise, the adapter may not operate properly.**

This QIG includes quick and easy way to set up the HD65U Adapter for Windows 8 & 7. For older operating system, please refer to the User Manual on the CD. It can also be downloaded it from the Hawking website.

### Package Contents

- Hi-Gain™ Wireless-AC USB Network Adapter
- CD: User Manual and Drivers

### Requirements

- Desktop or Laptop (an available CD-Rom Drive is recommended\*)
- Windows 2000/XP/Vista/7/8
- An Available USB Port
- Wi-Fi Internet Access (i.e. Hotspot, Wireless Access Point, Router)

\* Software also available for download from our website

## WINDOWS 8

(For Windows 7 instructions, please proceed to page 3)

### 1. Get Started

- a. Insert Setup CD and Select "Run Autorun.exe"



DVD Drive (E:) HD65U Master CD  
Tap to choose what happens with this disc.

#### DVD Drive (E:) HD65U Mast...

Choose what to do with this disc.

#### Install or run program from your media

Run autorun.exe  
Publisher not specified

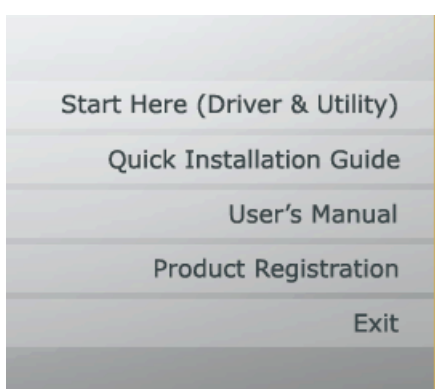
#### Other choices

Open folder to view files  
File Explorer

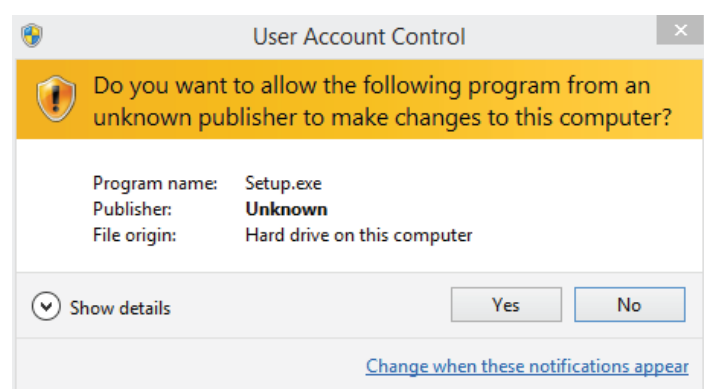
Take no action

Note: If it does not appear, please click on "File Explorer" in your taskbar, on the left hand column, choose "This PC" and select your CD/DVD Drive.

- b. A menu page should now appear on your screen. Click "Start Here (Driver & Utility)"



- c. Windows may prompt you to allow the program from an unknown publisher to make changes to this computer. Please click "Yes".



## 2. Run the Setup Program

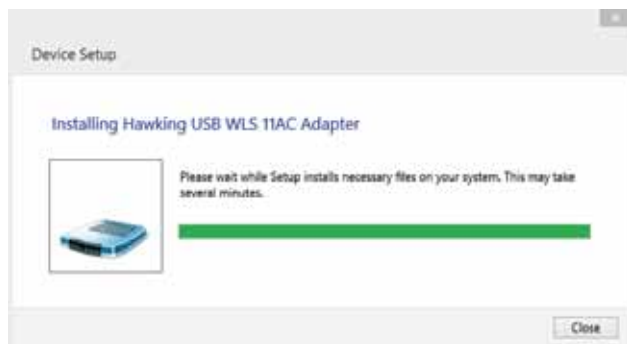
Cont'd from Windows 8 Instructions

- The setup program should appear now. Please click "Next" for the installation to get started.
- At the end of the installation, the computer will prompt you to reboot. Please save and close any other programs running and then click "Finish" to reboot the computer.

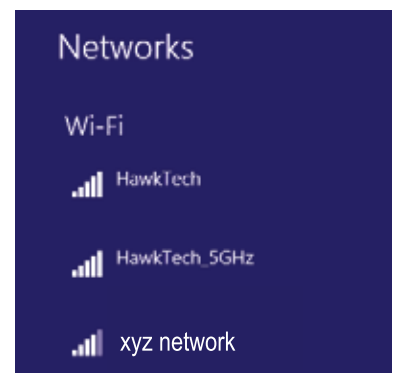


## 3. Restart your Computer and Plug in the USB Adapter

- After the computer has rebooted, please plug the HD65U into an available USB port. Your system will automatically search and finish up the driver installation process.
- After closing the "Device Setup" screen, look on the lower right corner of your taskbar. You will see a wireless icon.

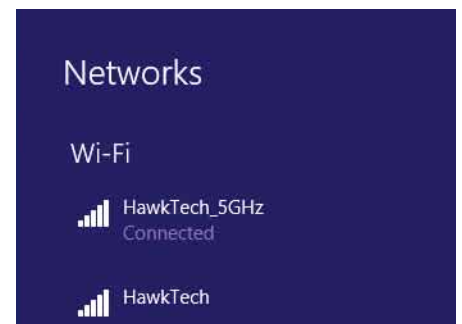
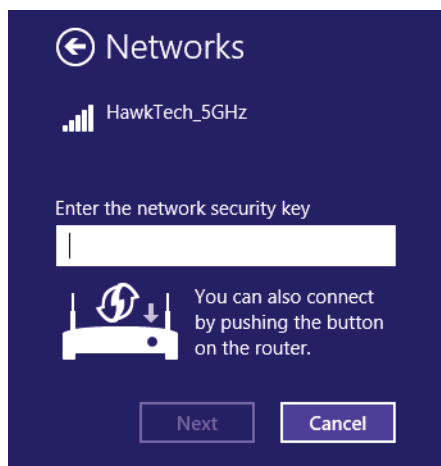


- Click on the Wireless to view all available wireless networks in your immediate area. Double click on the network you wish to connect to.



## 4. Access your Wireless Network

- If your selected wireless network is password protected, you will be prompted to enter in the password. Please contact your network administrator or wireless router manufacturer if you do not know the key.
- In a few seconds, you should see a "connected" message next to your selected wireless network. You can now go online!



Congratulations! You have completed the setup.

# WINDOWS 7

(For Windows 8 instructions, please proceed to page 1)

## 1. Insert Setup CD & Menu Page will come up

- a. Insert the CD in tray and wait a few seconds for the Auto-Play window to display. Then Select the "Run autorun.exe".



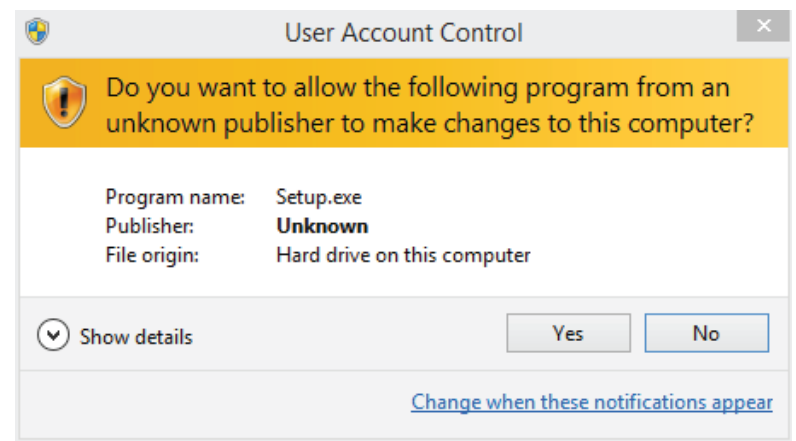
Note: If it does not appear, please go to "Start-> ->computer->CD/DVD Drive"



- b. A menu page should now appear on your screen. Click "Start Here (Driver & Utility)"



- c. Windows may prompt you to allow the program from an unknown publisher to make changes to this computer. Please click "Yes".



## 2. Run the Setup Program

- a. The setup program should appear now. Please click "Next" for the installation to get started.



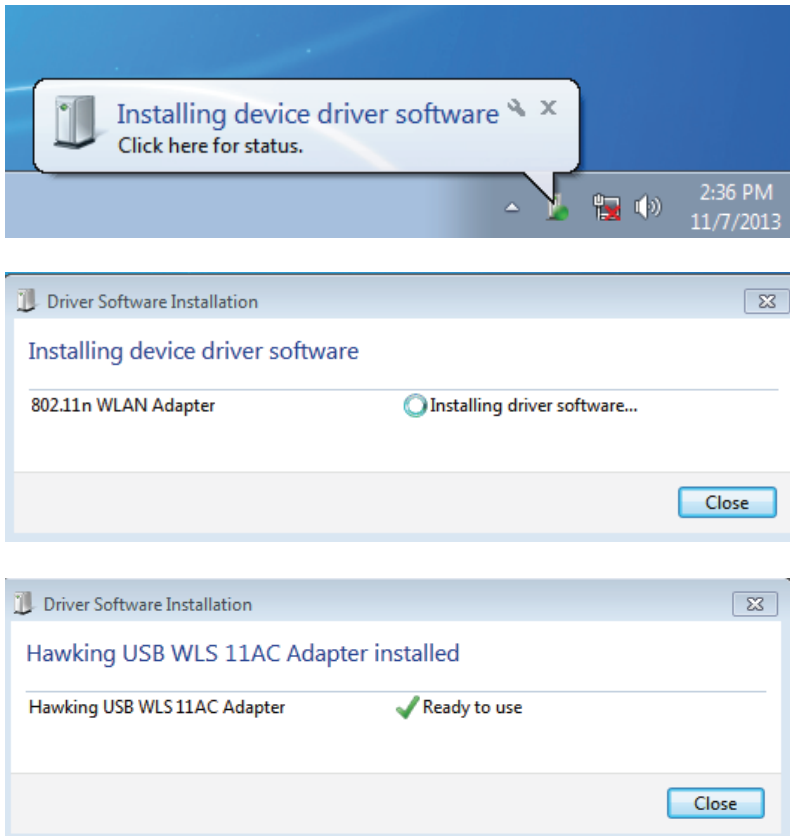
- b. At the end of the installation, the computer will prompt you to reboot. Please save and close any other programs running and then click "Finish" to reboot the computer.



### 3. Restart your Computer

Cont'd from Windows 7 Instructions

- a. After the computer has rebooted, please plug the HD65U into an available USB port. Your system will automatically search and finish up the driver installation process.

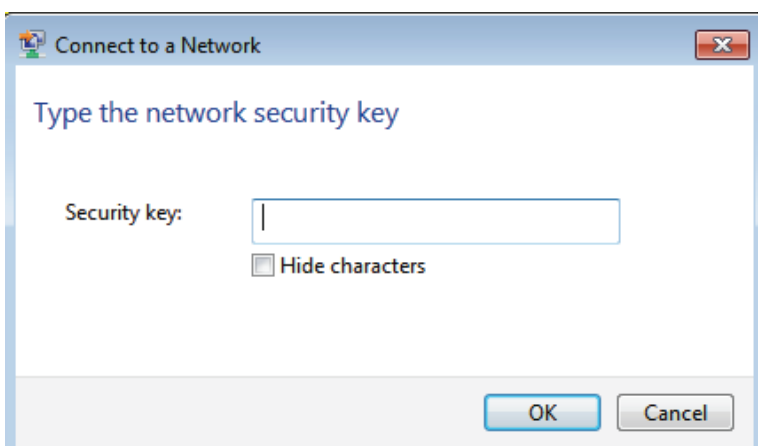


- b. After the driver has been installed, look on the lower right corner of your taskbar. You should see a wireless icon.



### 4. Access your Wireless Network

- a. If your selected wireless network is password protected, you will be prompted to enter in the password. Please contact your network administrator or wireless router manufacturer if you do not know the key.



- b. In a few seconds, you should see a "connected" message next to your selected wireless network. You can now go online!



Congratulations! You have completed the setup.