

Outdoor Wireless-1750AC Managed Access Point Pro

MODEL: **HOW17ACM**

Outdoor Wireless-1750AC

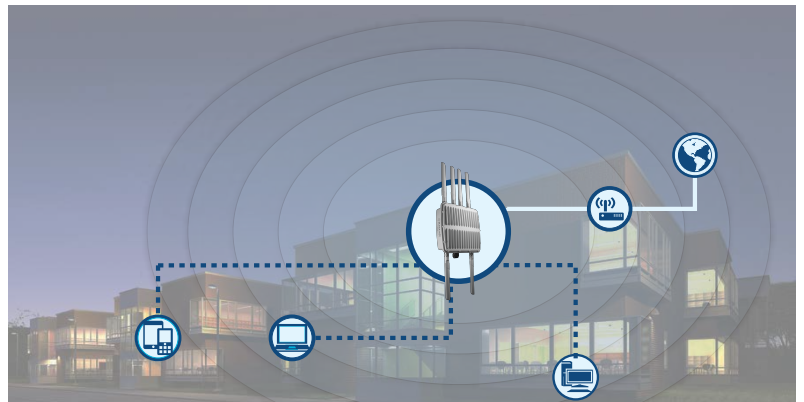


Features

- Up to 1750Mbps Wireless Speeds!
- Supports Wireless-AC devices and backwards compatible with Wireless b/g/n
- IEEE 802.11 a/n/ac coverage
- Included Wall and Pole Mount
- IP-67 Certification to withstand harsh outdoor environments
- Gigabit Ethernet Port for the fastest wired speeds
- Easy to use Web-based GUI for network configuration and management purposes. Can be completed from any computer, smartphone, or tablet
- Power over Ethernet (PoE) enabled

PACKAGE CONTENTS:

- One Outdoor Wireless-1750AC AP
- Six Outdoor Antennas
- One Wall/Pole Mounting Kit
- One CD (Contains Product Information)
- One Quick Installation Guide
- One RJ45 Ethernet cord (setup only)
- *PoE Injector sold separately and required



The HOW17ACM Outdoor Wireless-1750AC Managed AP Pro works as a powerful wireless connection for your wireless devices

Amplify your WiFi with Premium Connectivity & Versatility

The HOW17ACM is a highly-reliable industrial outdoor wireless access point designed to extend wireless network coverage in outdoor environments. It supports IEEE 802.11a/n/ac and is backwards compatible with the IEEE 802.11b/g/n wireless network standard. Also, the HOW17ACM provides simultaneous operation in both the 2.4GHz and 5GHz range, giving maximum flexibility. All computers and wireless-enabled network devices (including tablets, smartphone, ultrabooks, smart tvs, etc.) can connect to this wireless access point. IEEE 802.11ac wireless connectivity also gives you transfer speeds up to 1750Mbps!

The HOW17ACM allows computers and network devices to gain wireless access throughout their networking environment. Quickly configure your HOW17ACM with any Mac or Windows computer through your web browser, no software installation required! The versatile wall/pole mounting hardware included provides easy setup options for the HOW17ACM. Power over Ethernet (PoE) capable means you have the flexibility to mount the HOW17ACM anywhere without being near an AC outlet.

With an industrial standard IP67 rated enclosure, the HOW17ACM works in challenging outdoor weather conditions such as heavy rain, heat, snow and smoke.

Wireless AC

Standard Wireless-AC dictates that the tradeoff for superfast AC speeds is a proportional decrease in wireless range. Hawking Technology has developed this device to provide the same super speeds typical of Wireless-AC, but also provide concurrent 2.4GHz support via Access Point to offset this range decrease. Use this device with any combination of our Wireless-AC products, even with the devices you already have, and increase your overall wireless network quality.

Hassle-free Installation

The HOW17ACM is quick and easy to install using any Mac or Windows computer. Simply connect the HOW17ACM to your computer, open your web browser, and access the setup page to configure the device. Connect the HOW17ACM to the router or PoE Switch with an Ethernet cable and instantly boost your wireless network speeds up to 1750Mbps!

Power over Ethernet Supported

The HOW17ACM uses PoE. This feature provides flexibility in mounting conditions, allowing you to install in many different places with the included mounting kits. It supports PoE protocol 802.3at.



HAWKING TECHNOLOGIES, INC.

16 Goodyear, Suite 140 | Irvine, CA 92618 | USA

Sales Contact

Phone: 888.662.8838

Email: sales@hawkingtech.com

Technical Support

Phone: 888.202.3344

Email: techsupport@hawkingtech.com

SPECIFICATIONS:

MCU/RF: Qualcomm Atheros QCA9558 (2.4GHz) + QCA9880 (5GHz)

Ethernet Ports: LAN: 1x10/100/1000M Gigabit Ethernet with PoE Support 802.3at

Antenna: 3 x External Removable N-Type 2.4GHz 4dBi Antennas, 3 x External Removable N-Type 5GHz 6dBi Antennas

Output Power:

802.11b: 27.5dBm@ 1Mbps / 27.5dBm@ 11Mbps

802.11g: 27.5dBm@ 6Mbps / 23.5dBm@ 54Mbps

802.11n (2.4G): 27.5dBm@ MCS0 (HT20/40) / 22.5dBm@ MCS7 (HT20/40)

802.11a: 26.5dBm@ 6 Mbps / 22.5dBm@ 54Mbps

802.11a/n (5G): 27.5dBm@ MCS0/MCS8 (HT20/40) / 22.5dBm@ MCS7/MCS15 (HT20/40)

802.11ac: 27.5dBm@ MCS0 (VHT20/40/80) / 22.5dBm@ MCS7 (VHT20/40/80) / 19.5dBm@ MCS9 (VHT20/40/80)

Receive Sensitivity:

802.11b: -93dBm@ 1Mbps / -85dBm@ 11Mbps

802.11g: -86dBm@ 6Mbps / -72dBm@ 54Mbps

802.11n (2.4G): -83dBm@ MCS0 (HT20/40) / -66dBm@ MCS7 (HT20/40)

802.11a: -90dBm@ 6Mbps / -74dBm@ 54Mbps

802.11a/n (5G): -90dBm@ MCS0 (HT20) / -70dBm@ MCS7 (HT20) / -87dBm@ MCS0 (HT40) / -68dBm@ MCS7 (HT40)

802.11ac: -84dBm@ MCS0 (VHT20/40/80) / -58dBm@ MCS9 (VHT40/80)

Power: PoE Enabled IEEE 802.3at

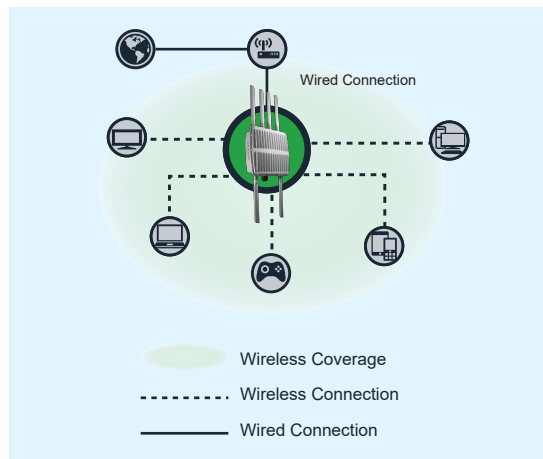
Operating Temperature: -40~70C° (-40~158F°)
Storage: -40~80C° (-40~176F°)

Dimension: 254(L) x 222(W) x 89(H)mm
(10 x 8.75 x 3.5 in) w/o Antenna

Weight: 3kg (106oz) w/ Antennas

Certification: CE/FCC

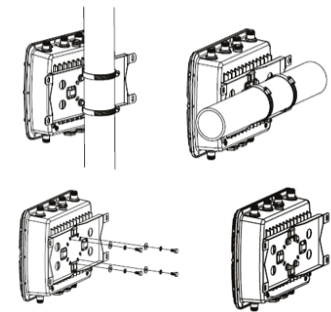
ACCESS POINT



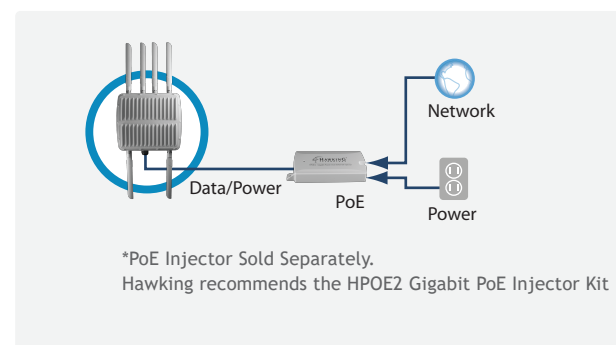
Connect all your devices to the HOW17ACM with increased range and speeds. Your wireless options are endless! In addition, Wireless-AC speeds are optimal for data intensive applications like streaming, downloading and surfing high definition content.

MAXIMUM VERSATILITY

The HOW17ACM has a wall/pole mount kit that lets you quickly and easily mount the device. Flexibility of installation allows you to place the unit anywhere to give you maximum speed and bandwidth.



PoE COMPATIBLE



By combining your power and data connections into a single cable, PoE can simplify the setup. This gives you flexibility to install the device in any location, even out of the way locations with few power outlets.