

## Start Here ▶▶▶

### Preinstallation: Check Package Contents & Requirements

#### Package Contents

- 1x Wireless-150N Mini Range Extender
- 1x Power Adapter
- 1x Ethernet Cable
- 1x 2dBi Antenna
- 1x Setup CD-ROM (User's Manual Included)

#### Requirements for your Home/Office

- Wired or Wireless Internet Connection
- Computer with Wireless or Wired Access
- Power Outlet
- Hi-Gain Antenna (Optional Upgrade)

## 1 Find an Optimal Location

Your Hi-Gain™ Wireless-150N Mini Range Extender should be placed in optimal location within the range of your wireless network.

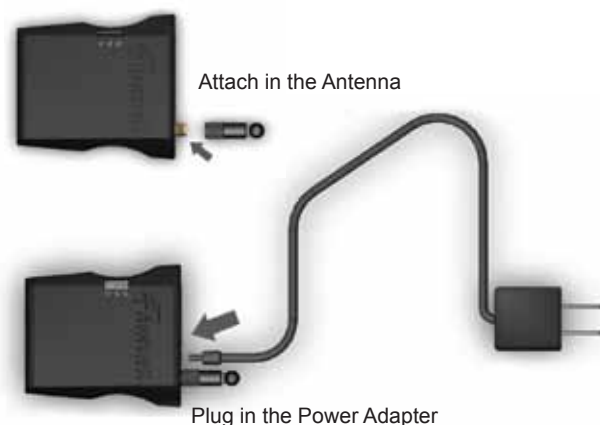
**Make sure the Extender is placed in a location where it can receive a strong signal from your desired wireless Internet connection. The Extender will not work without a signal can repeat.**



Hi-Gain™ Wireless-150N Mini Range Extender HWREN15

#### A. Attach the Antenna to the Repeater.

Locate the antenna provided with the HWREN15 and attach it to the antenna jack on the HWREN15.



Plug in the Power Adapter

#### B. Plug in the Power Adapter.

When you have completed the antenna setup, plug the included power adapter into the nearest power outlet.

## 3 Configuration Settings

The Quick Setup will now prompt you to enter an security key only if the network you are connecting to is encrypted. Enter the key and click **Continue**.

Note: If there is no security on the original network, security, this step will automatically be skipped.



If you do not know the security key of the network you are connecting to, please consult your network administrator.

The setup of your HWREN15 is now complete. A summary page will appear with all your settings. If anything is incorrect, click back to re-enter your settings.



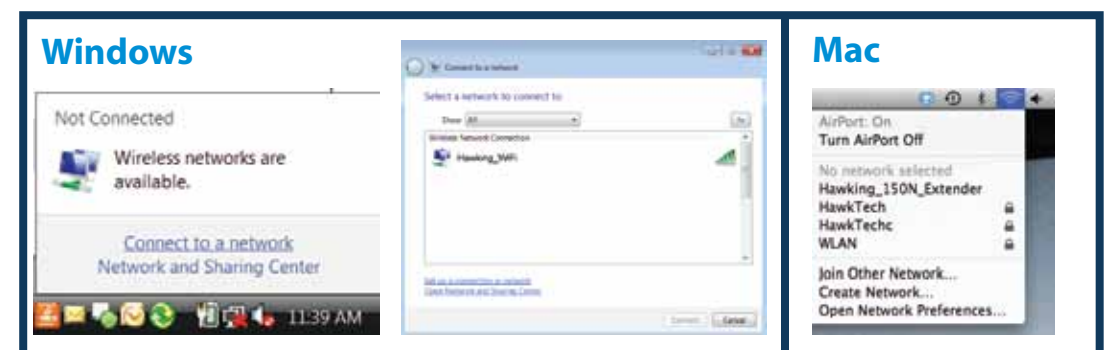
Click Finish to complete your setup. The HWREN15 will automatically reboot and start repeating and extending your wireless range.

NOTE: After the reboot, the HWREN15 will join the original network and will longer be listed as "Hawking\_HWREN15\_Extender". It will automatically be renamed to your original network, unless it was specified during the set up process. If you wish to modify this name, please refer to the user's manual.

## 2 Setup the Mini Range Extender

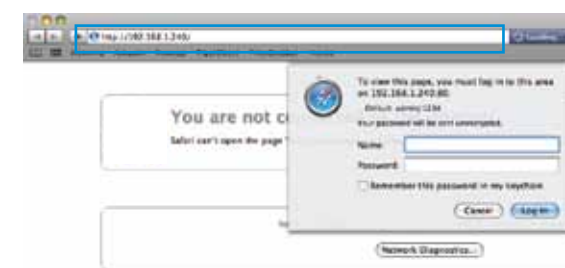
#### A. To setup, you must access the built-in Web Interface.

To access the Web Interface using a **Wireless Connection**: turn on your wireless enabled computer or laptop, go to wireless networking access and select the wireless network named **'Hawking\_HWREN15\_Extender'**



To set up using a **Wired Connection**: use the included Ethernet cable to connect to the HWREN15 'wired' ports on the back of the HWREN15.

#### B. Once connected, open a web browser and type in the following web address in the web address bar: <http://192.168.1.240>



Once the page loads, enter the following login information:

Login: **admin**  
Password: **1234**

Click **Login** to continue.

#### C. Click Scan to find your wireless Internet connection. After the list appears, select the connection and click Connect.

If the signal strength is low or your network does not appear, you may need to adjust the location of your HWREN15. Click Scan to try again.



Now that you are done with setup. To join the network with your Wi-Fi enabled device, simply go to your wireless networking access, find the original Wireless Internet connection and connect.



For more information on the advanced features and settings of the Hi-Gain Wireless-150N Mini Repeater please refer to the User's Manual located on the CD-ROM.





## LED Description

### Wired 2 (RJ-45 Port)

- LED is on, when this port is being used.

### Power/Wireless

- LED is on, when the power adapter is connected and plugged in to an outlet.  
- LED is on, (blinking) when wireless data activity is detected.

### Wired 1 (RJ-45 Port)

- LED is on, when this port is being used.



## Front Panel Description

### WPS / Reset

Reset the router to factory default settings (clear all settings) or start WPS (Wi-Fi Protected Setup) function.



## Back Panel Description

### Antenna Port (RP-SMA)

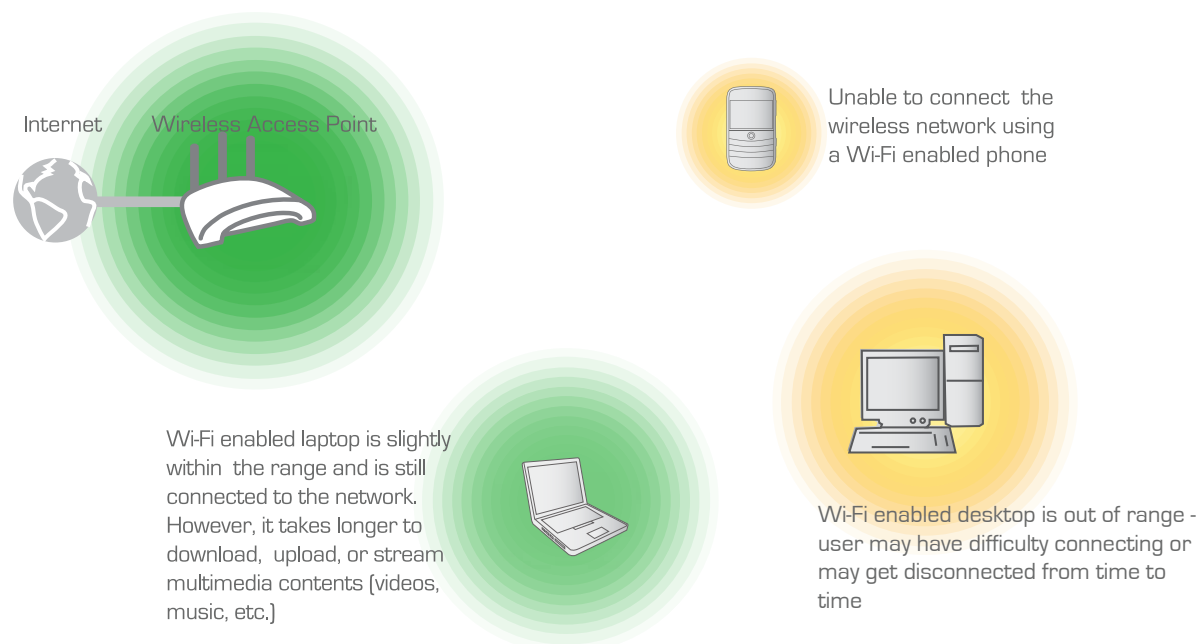
### Wired (RJ-45 Ports)

### Power Plug

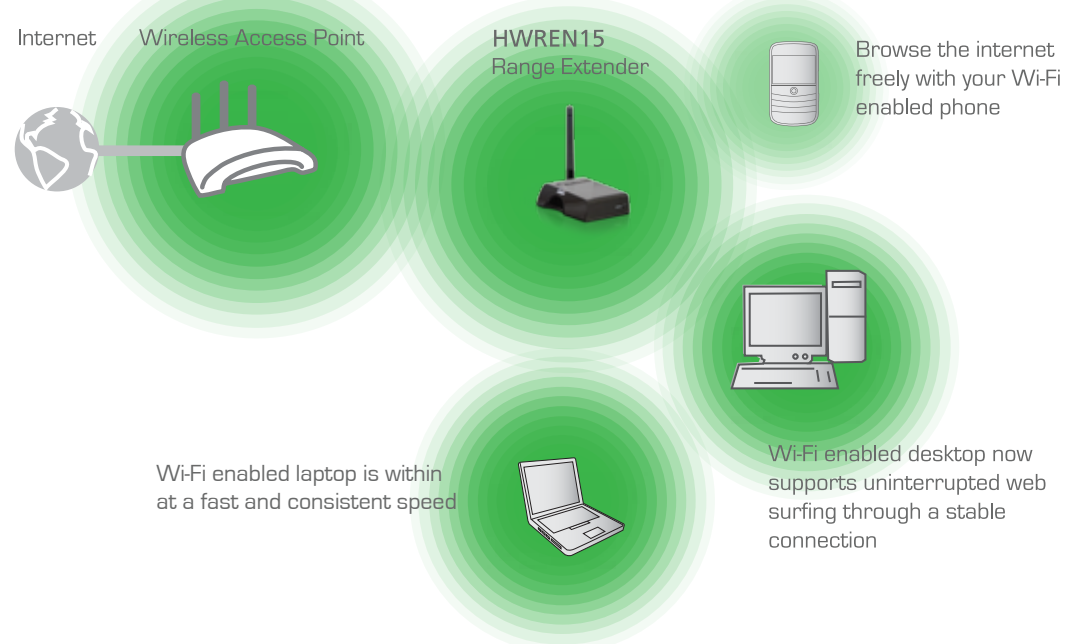


## How Does the HWREN15 Range Extender Work?

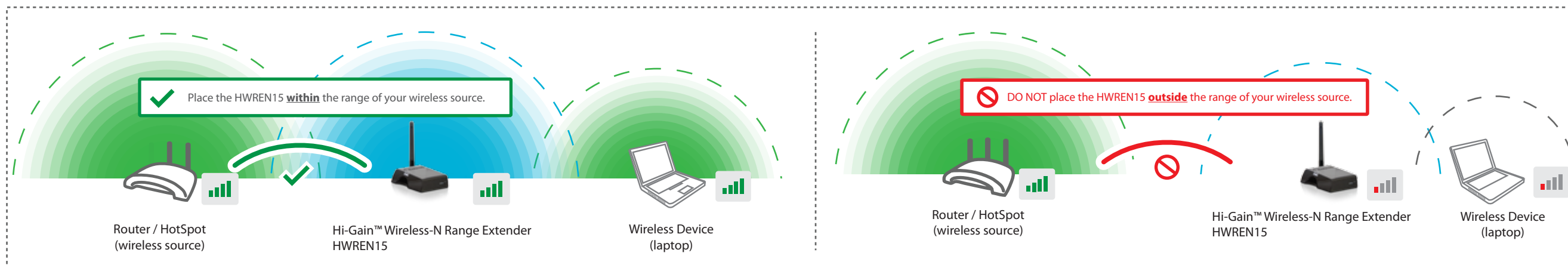
**Lack of range from a standard Wi-Fi Network reduces the overall network connectivity and performance.**



**By adding the Range Extender to your network, it extends your original network and allows Wi-Fi enabled devices to connect freely and effortlessly.**



## Placing your Range Extender in an Optimal Location



## Optional Antenna Upgrades

(Sold Separately, More Products Available Online)

Hi-Gain 7dBi Omni Directional Antenna  
HAI7SIP



Hi-Gain Outdoor 9dBi  
Omni-Directional Antenna Kit  
HAO9SIP

