

# Start Here ▼▼

### Package Contents

- Wireless AC USB Network Adapter
- CD: User Manual and Drivers

### Requirements

- Desktop or Laptop (with an available CD-Rom Drive is recommended\*)
- Windows 2000/XP/Vista/7/8
- Mac OS 10.6 +
- An Available USB Port
- Wi-Fi Internet Access (i.e. Hotspot, Wireless Access Point, Router)

\* Software also available for download from our website

**⚠ Do not connect the HW7ACU until you install the driver from the CD and are instructed to do so. Otherwise, the adapter may not operate properly.**

This QIG includes quick and easy way to set up the HW7AC Adapter for Windows 7/8 and Mac 10.9. For older operating systems, please refer to the User Manual on the CD. Driver downloads can also be found at [www.hawkingtech.com](http://www.hawkingtech.com).

# WINDOWS 7/8

(For Apple OS instructions, please proceed to page 3)

## 1. Get Started

a. Insert Setup CD and Select "Run Autorun.exe"



DVD RW Drive (D:) HW7ACU Setup CD  
Tap to choose what happens with this disc.

DVD RW Drive (D:) HW7AC...

Choose what to do with this disc.

Install or run program from your media

Run autorun.exe  
Publisher not specified

Other choices

Open folder to view files  
File Explorer

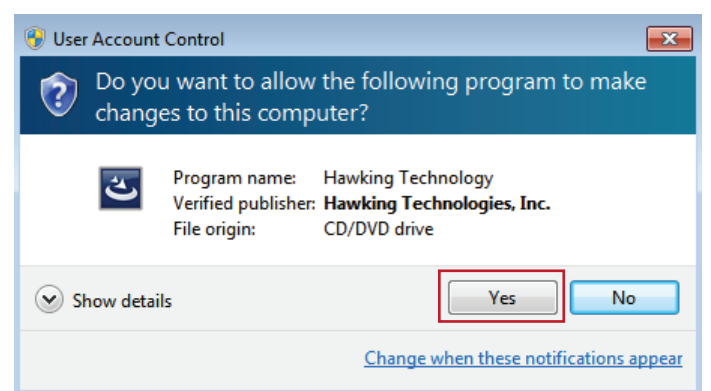
Take no action

Note: If it does not appear, please click on "File Explorer" in your taskbar, on the left hand column, choose "This PC" and select your CD/DVD Drive.

b. A menu page should now appear on your screen. Click "Start Here (Driver & Utility)"



c. Windows may prompt you to allow the program to make changes to this computer. Please click "Yes".



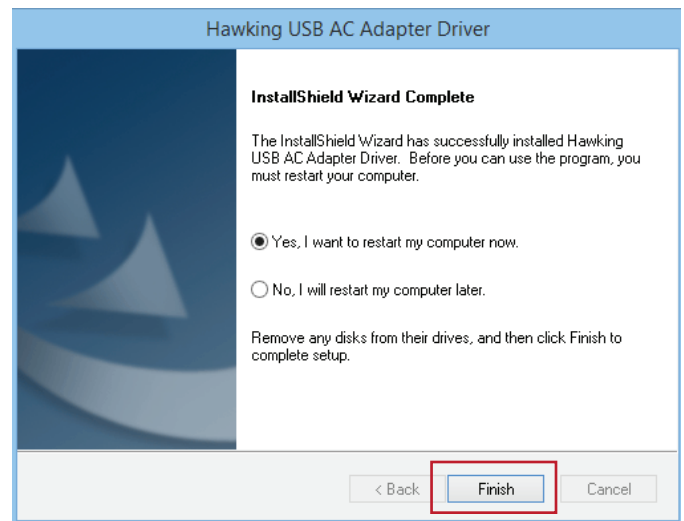
## 2. Run the Setup Program

Cont'd from Windows Instructions

- The setup program should appear now. Please click "Next" for the installation to get started.

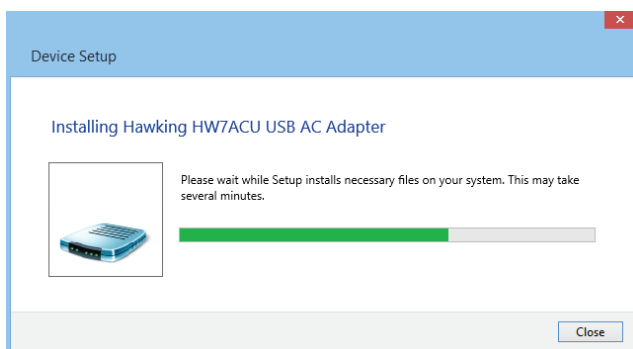


- At the end of the installation, the computer will prompt you to reboot. Please save and close any other programs running and then click "Finish" to reboot the computer.

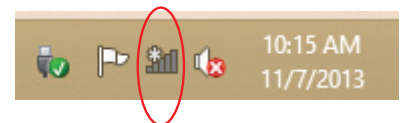


## 3. Restart your Computer and Plug in the USB Adapter

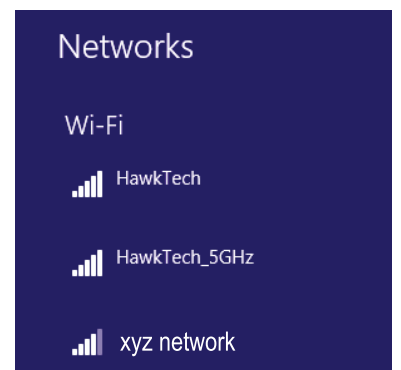
- After the computer has rebooted, please plug the HW7ACU into an available USB port. Your system will automatically search and finish up the driver installation process.



- After closing the "Device Setup" Screen, look on the lower right corner of your taskbar. You will see a "wireless" icon.

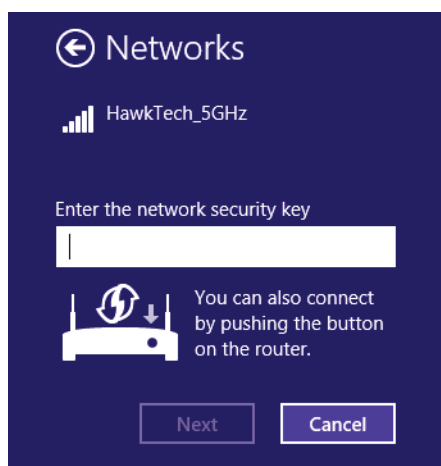


- Click on the "wireless" icon to view all available wireless networks in your immediate area. Double click on the network you wish to connect to.

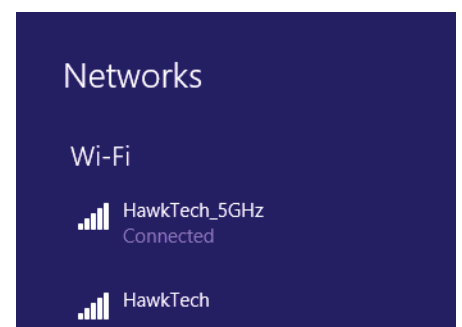


## 4. Access your Wireless Network

- If your selected wireless network is password protected, you will be prompted to enter in the password. Please contact your network administrator or wireless router manufacturer if you do not know the key.



- In a few seconds, you should see a "connected" message next to your selected wireless network. You can now go online!



Congratulations! You have completed the setup.

# Apple OS X Instructions

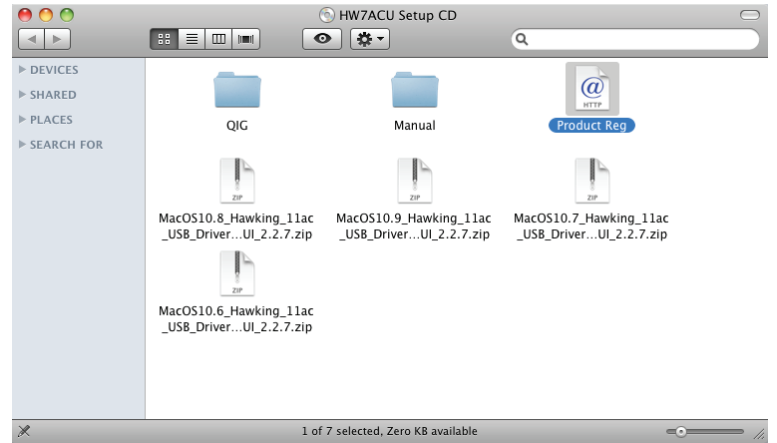
(For Windows instructions, please proceed to page 1)

## 1. Insert Setup CD & Wait for Icons to Show up

- a. Insert the CD and wait a few seconds for it to auto-appear on your desktop

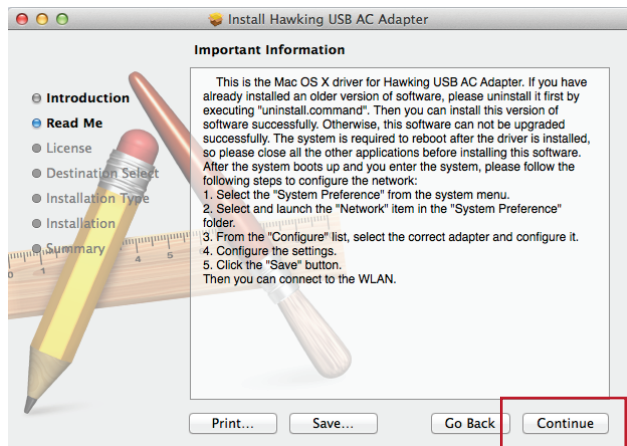


- b. Double click on the CD icon and a folder should appear showing you the files on the CD. Choose your operating system. If you do not see the driver for your operating system, go to [hawkingtech.com](http://hawkingtech.com) and download the appropriate file listed under HW7ACU>support.

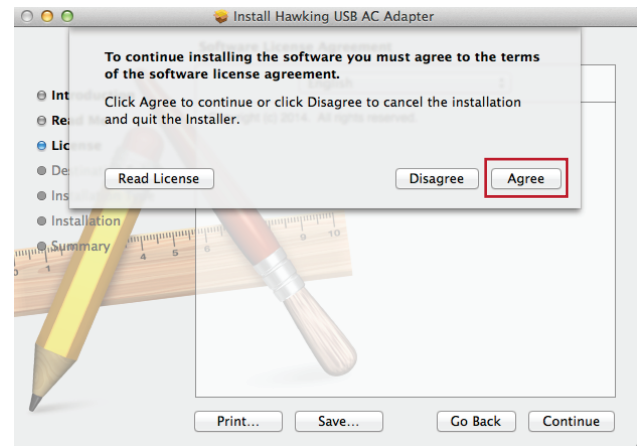


## 2. Run the Driver Install Program

- a. The install program should now appear. Click "continue" to begin the installation



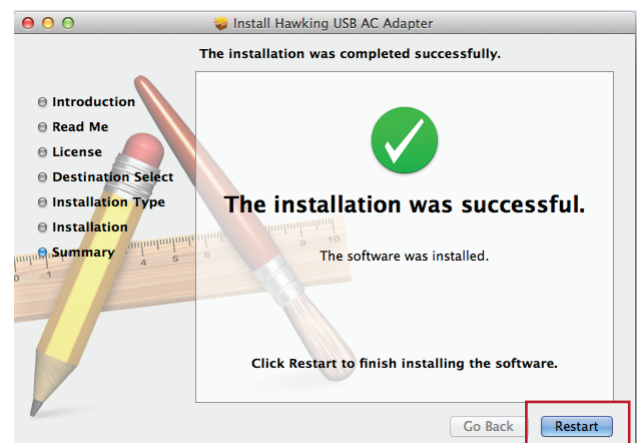
- b. During the installation, it will prompt you to agree/disagree to the license agreements. Click "Agree"



- c. Installing software in Mac OS X requires an administrator account name and password. When installing software, a window displays requesting administrator authorization (even if you're the only person using the computer). This is the name and password that you use to log into the computer. If you log in automatically, you can find the account name(s) in "Account preferences".



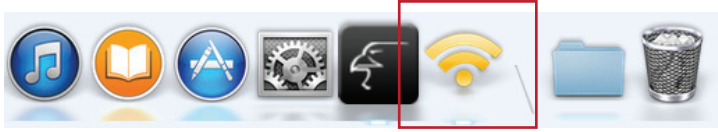
- d. At the end of the installation, the software will prompt you to reboot. Please save and close any other programs running. When ready, click "Reboot" to restart your computer and complete installation for the HW7ACU.



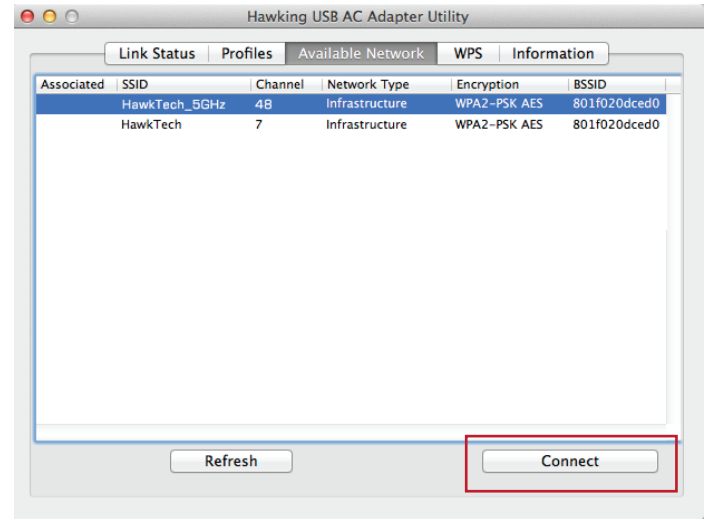
### 3. Connecting to a Wireless Network

Cont'd from Mac OS Instructions

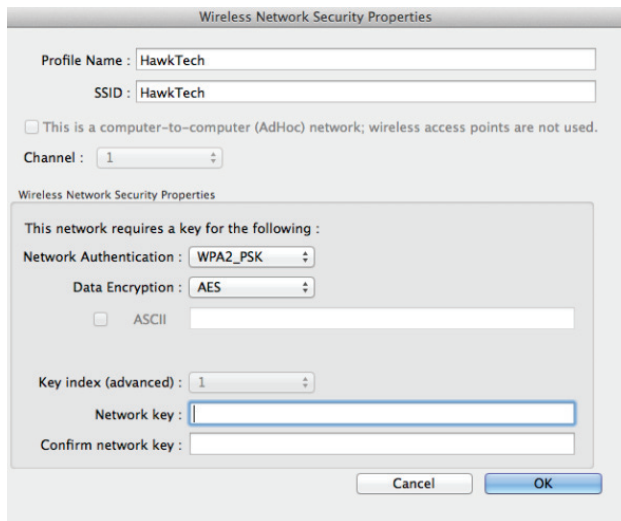
- a. After the computer has rebooted, please plug the HW7ACU into your computer. Mac OS should automatically install the device. After a few seconds, the wireless utility should appear in the dock.



- b. Double click on the Wireless Utility should bring up the Hawking USB AC Adapter Utility. Under Available Network, you should see a list of all the wireless networks in your area. Choose your network and click "Connect".



- c. You can create a profile here and if your selected wireless network is password protected, you will be prompted to enter in the password. Please contact your network administrator or wireless router manufacturer if you do not know the key.



- d. In a few seconds, under the "Link Status" tab, you should see the HW7ACU connect to your network.



Congratulations! You have completed the setup.