

**● HS2G24T**

**High Speed Wired Data Transmissions  
Supports 8K MAC Addresses  
19" 1U Rack Mount  
Easy to Install and Use**

**PACKAGE CONTENTS:**

- ◆ One 2-Port 1000Mbps + 24-Port 10/100Mbps Switch
- ◆ One Power Adapter
- ◆ One Easy-to-Follow User's Manual

**Optimizing your budget while increase data transfer performance with a "+ 2 Gigabit Port"!**

**Fast and Easy Networking**

The Hawking HS2G24T Gigabit + Fast Ethernet Switch, 24 ports 10/100Mbps Rack Mount with an additional 2 Ports 10/100/1000Mbps, is designed for easy installation and high performance. The HS2G24T enables the segmentation of large networks into smaller, connected subnets, thus allowing you to experience improved performance for demanding applications. Port 1 to 24 delivers up to 200Mbps throughput, and is able to operate in either half or full-duplex modes. Port 25 to 26 delivers up to 2000Mbps throughput in full duplex mode.

The HS2G24T features an N-way auto-negotiation (or auto-sense) function (refer to the chapter titled, "N-way Process"), which automatically adjusts the device for optimum operation. "Store-and-Forward" architecture filters eliminate error packets and improve efficiency. The switch also utilizes auto-MDI/MDIX technology, which enables you to use either standard Ethernet cables or crossover Ethernet cables to connect with other devices. Better yet, the Plug and Play HFS24T is powerful and reliable, and can run your high-end video, graphic, multimedia, database, and mission-critical applications with ease. Better yet, the Plug and Play HS2G24T is powerful and reliable, and can run your high-end video, graphic, multimedia, database, and mission-critical applications with ease.

The HS2G24T is ideal use with multiple, high-speed servers to share bandwidth within 10Mbps or 100Mbps workgroups to share bandwidth within 10Mbps, 100Mbps, or even 1000Mbps Ethernet environments.

**Features:**

- ◆ Two 1000BASE-T Gigabit Ethernet port
- ◆ Twenty-four 100BASE-TX Fast Ethernet ports
- ◆ Supports Auto-MDIX for each port
- ◆ Support Full/Half duplex transfer mode for 10/100Mbps Fast Ethernet ports
- ◆ Support Full duplex transfer mode for 1000Mbps Gigabit Ethernet ports
- ◆ Full wire speed reception and transmission
- ◆ Store-and-Forward switching method
- ◆ Integrated address Look-Up Engine, supports 8K MAC addresses
- ◆ Supports 2.5Mbit RAM for data buffering
- ◆ Extensive front-panel diagnostic LEDs
- ◆ IEEE 802.3x flow control for full-duplex
- ◆ Back pressure flow control for half-duplex
- ◆ Standard 19" Rack Mount size

**System Requirements:**

- ◆ IEEE 802.3 10Base-T, 100Base-TX, or 1000Base-T Ethernet

# 2-Port 1000Mbps + 24-Port 10/100Mbps Auto-Sensing Switch

CONNECT WHEREVER YOU WANT · WHENEVER YOU WANT

## CAREFREE NETWORKING



## HS2G24T

**High Speed Wired Data Transmissions**  
**Easy Installation & Setup**  
**Two Year Warranty**

### SPECIFICATIONS

#### Network Specifications

- IEEE 802.3 10BASE-T
- IEEE 802.3u 100BASE-TX,
- IEEE 802.3ab 1000BASE-T
- IEEE 802.3x Full Duplex Flow Control

#### Max Bandwidth

- Ethernet: 10Mbps (Half-duplex)  
20Mbps (Full-duplex)
- Fast Ethernet: 100Mbps (Half-duplex)  
200Mbps (Full-duplex)
- Gigabit Ethernet: 2000Mbps (Full-duplex)

#### Media Interface

- (24) 10/100Mbps RJ-45 ports
- (2) 1000Mbps RJ-45 port

#### Data RAM Buffers

- 2.5Mbit per device

#### MAC Address Table

- Up to 8K entries per device

#### Network Cables

- Gigabit Ethernet - 4-Pair UTP CAT 5
- Fast Ethernet - 2-Pair UTP CAT 5
- Ethernet - 2-Pair UTP CAT 3, 4, 5

#### Operating Temperature

- 0° - 40° C

#### Relative Humidity

- 5 % - 90% non-condensing

#### Power

- 100 - 240VAC 50/60Hz, Internal Universal switching Power
- Power Consumption: 11.75 watts. (max.)

#### Diagnostics LEDs

- Per unit: Power
- Port 1 -24: Link/Activity, 100 Mbps
- Port 25 -26: Link/Activity, 1000Mbps, 100Mbps

#### Dimensions (W x D x H)

- 440 x 140 x 44 mm

#### Certifications

- FCC Part 15 Class A
- CE mark Class A
- VCCI-A

### HAWKING TECHNOLOGIES, INC.

**USA:** Irvine, California

**Website:** www.hawkingtech.com

**Email:** sales@hawkingtech.com

**Tel:** 888.662.8828

**Europe:** Rotterdam, The Netherlands

**Website:** www.hawkingeurope.com

**Email:** sales@hawkingeurope.com

**Tel:** 31.10.245.1600

### RELATED PRODUCTS:

- HFS5T** 5-Port 10/100M Fast Ethernet Switch
- HFS8T** 8-Port 10/100M Fast Ethernet Switch
- HFS16T** 16-Port 10/100M Rack Mount Switch
- HGS5T** 5-Port Gigabit Network Switch
- HGS8T** 8-Port Gigabit Network Switch
- HS1G8T** 1-Port 1000Mbps + 8-Port 10/100Mbps Auto-Sensing Switch

### READY, NETWORK & GO!

#### Step 1 - Power On the Switch

Power on the switch by connecting the power cord.

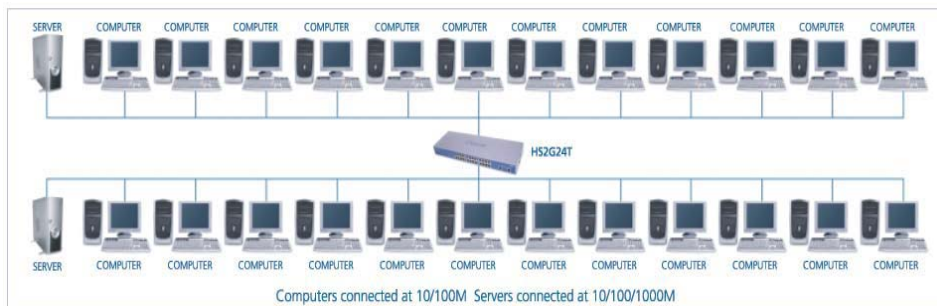
#### Step 2 - Connect Computers, Servers, etc.

Connect computers, servers, or other appropriate devices to the ports on the switch. Note: Port#1-24 are the 10/100Mbps and Port#25-26 are the 1000Mbps.

#### Step 3 - Get Started

Power on the attached computers, servers, etc. and you're ready to go!

### PRODUCT DIAGRAMS:



### LED Panel Display

#### Power LED:

The indicator is lit when the power is on.

#### Link/Activity LED:

Blinks during power-on diagnostics

#### 1000Mbps LED:

LED is lit when there is a connection to a 1000Mbps Gigabit Ethernet device on the Gigabit port.

#### 100Mbps LEDs:

These LEDs are lit when there is a connection (or link) to a 100Mbps Fast Ethernet device at the desired port.