



HMP51U

1 PORT USB PRINT SERVER for MULTI-FUNCTION PRINTERS

website www.hawkingtech.com
e-mail techsupport@hawkingtech.com

© COPYRIGHT 2015 HAWKING TECHNOLOGIES, INC. ALL RIGHTS RESERVED.

USER'S MANUAL ▶▶

COPYRIGHT

Copyright ©2015 by Hawking Technologies, Inc. All rights reserved. No part of this publication may be reproduced, transmitted, transcribed, stored in a retrieval system, or translated into any language or computer language, in any form or by any means, electronic, mechanical, magnetic, optical, chemical, manual or otherwise, without the prior written permission of this company

LIMITED WARRANTY

Hawking Technology guarantees that every HMPS1u 1-Port USB 2.0 Print Server is free from physical defects in material and workmanship under normal use for one (1) year from the date of purchase. If the product proves defective during this one-year warranty period, call Hawking Customer Service in order to obtain a Return Authorization number. Warranty is for repair or replacement only. Hawking Technology does not issue any refunds. **BE SURE TO HAVE YOUR PROOF OF PURCHASE. RETURN REQUESTS CAN NOT BE PROCESSED WITHOUT PROOF OF PURCHASE.** When returning a product, mark the Return Authorization number clearly on the outside of the package and include your original proof of purchase.

IN NO EVENT SHALL HAWKING TECHNOLOGY'S LIABILITY EXCEED THE PRICE PAID FOR THE PRODUCT FROM DIRECT, INDIRECT, SPECIAL, INCIDENTAL OR CONSEQUENTIAL DAMAGES RESULTING FROM THE USE OF THE PRODUCT, ITS ACCOMPANYING SOFTWARE OR ITS DOCUMENTATION. Hawking Technology makes no warranty or representation, expressed, implied or statutory, with respect to its products or the contents or use of this documentation and all accompanying software, and specifically disclaims its quality, performance, merchantability, or fitness for any particular purpose. Hawking Technology reserves the right to revise or updates its products, software, or documentation without obligation to notify any individual or entity. Please direct all inquiries to: techsupport@hawkingtech.com

Federal Communication Commission Interference Statement

FCC Part 15

This equipment has been tested and found to comply with the limits for a Class B digital device, pursuant to Part 15 of FCC Rules. These limits are designed to provide reasonable protection against harmful interference in a residential installation. This equipment generates, uses, and can radiate radio frequency energy and, if not installed and used in accordance with the instructions, may cause harmful interference to radio communications. However, there is no guarantee that interference will not occur in a particular installation. If this equipment does cause harmful interference to radio or television reception, which can be determined by turning the equipment off and on, the user is encouraged to try to correct the interference by one or more of the following measures:

1. Reorient or relocate the receiving antenna.
2. Increase the separation between the equipment and receiver.
3. Connect the equipment into an outlet on a circuit different from that to which the receiver is connected.
4. Consult the dealer or an experienced radio technician for help.

FCC Caution

This equipment must be installed and operated in accordance with provided instructions and a minimum 20 cm spacing must be provided between computer mounted antenna and person's body (excluding extremities of hands, wrist and feet) during wireless modes of operation.

This device complies with Part 15 of the FCC Rules. Operation is subject to the following two conditions: (1) this device may not cause harmful interference, and (2) this device must accept any interference received, including interference that may cause undesired operation.

Any changes or modifications not expressly approved by the party responsible for compliance could void the authority to operate equipment.

Federal Communication Commission (FCC) Radiation Exposure Statement

This equipment complies with FCC radiation exposure set forth for an

uncontrolled environment. In order to avoid the possibility of exceeding the FCC radio frequency exposure limits, human proximity to the antenna shall not be less than 20cm (8 inches) during normal operation.

The antenna(s) used for this transmitter must not be co-located or operating in conjunction with any other antenna or transmitter.

R&TTE Compliance Statement

This equipment complies with all the requirements of DIRECTIVE 1999/5/EC OF THE EUROPEAN PARLIAMENT AND THE COUNCIL of March 9, 1999 on radio equipment and telecommunication terminal Equipment and the mutual recognition of their conformity (R&TTE).

The R&TTE Directive repeals and replaces in the directive 98/13/EEC (Telecommunications Terminal Equipment and Satellite Earth Station Equipment) As of April 8, 2000.

Safety

This equipment is designed with the utmost care for the safety of those who install and use it. However, special attention must be paid to the dangers of electric shock and static electricity when working with electrical equipment. All guidelines of this and of the computer manufacture must therefore be allowed at all times to ensure the safe use of the equipment.

EU Countries Intended for Use

The ETSI version of this device is intended for home and office use in Austria, Belgium, Denmark, Finland, France, Germany, Greece, Ireland, Italy, Luxembourg, the Netherlands, Portugal, Spain, Sweden, and the United Kingdom.

The ETSI version of this device is also authorized for use in EFTA member states: Iceland, Liechtenstein, Norway, and Switzerland.

Table of Contents

CHAPTER1	INTRODUCTION	6
1.1	<i>What is described in this Manual</i>	6
1.2	<i>Customer Support</i>	6
CHAPTER2	PRODUCT OVERVIEW	7
2.1	<i>Package Contents</i>	7
2.2	<i>Product CD</i>	7
2.2.1	<i>Start-up Procedures</i>	7
2.3	<i>Physical Description</i>	7
2.4	<i>Supported USB Devices</i>	8
CHAPTER3	BASIC INSTALLATION	9
3.1	<i>Connecting the Hardware</i>	9
3.2	<i>Assigning an IP Address to the Server</i>	9
3.2.1	<i>Preliminary</i>	9
3.2.2	<i>IP Address</i>	9
3.2.3	<i>Methods for Setting the IP Address</i>	10
3.2.4	<i>Server Names and Server Name Rules</i>	10
3.2.5	<i>Setting the IP Address Using DHCP</i>	10
3.2.6	<i>Setting the IP Address Using the HMPS1u Software</i>	10
CHAPTER4	USING THE HMPS1U	14
4.1	<i>Introduction</i>	14
4.2	<i>Connect & Disconnect</i>	14
4.3	<i>Subnet Issue</i>	14
4.4	<i>Installation of a Printer/Multifunction Printer/Scanner</i>	15
4.5	<i>Auto-Connect Printer</i>	17
4.6	<i>Network Scanner</i>	19
4.7	<i>USB Storage</i>	21
4.8	<i>Request to Connect</i>	22
4.9	<i>Quitting the HMPS1u Setup Software</i>	23
4.10	<i>Limitations</i>	24
CHAPTER5	THE SERVER'S WEB PAGES	25
5.1	<i>Introduction</i>	25
5.2	<i>Using the Server's Web Pages</i>	25
5.2.1	<i>Displaying Server Status</i>	25
5.2.2	<i>Setting up Server Configuration</i>	27
CHAPTER6	TROUBLESHOOTING	31
6.1	<i>LED Indicators</i>	31

6.2	<i>Firewall</i>	31
CHAPTER7	RESTORE FACTORY DEFAULTS	32
7.1	<i>Using the Server's Web Pages</i>	32
7.2	<i>Using Init Button</i>	32
7.3	<i>Default Parameters List</i>	33
CHAPTER8	UPGRADE FIRMWARE	34
CHAPTER9	THE INIT BUTTON	36

Chapter1 Introduction

Thank you for purchasing the HMPS1u Multifunction Print Server (in the following referred to as "Server"). This Server is designed to connect your printers, Multifunction Printers, Scanners, Fax, and USB hard drives, allowing all network users' access to these shared USB devices.

1.1 What is described in this Manual

This manual provides introductory information as well as detailed instructions on how to set up and manage the HMPS1u in various network environments.

To fully benefit from this document, you should be familiar with basic networking principles. The instructions described in this manual are based on the settings in a new Server. To reload the Factory Parameters, you can reset this Server back to Factory Default, which will restore most of the settings. For details, please refer to the chapter "Restore Factory Defaults".

1.2 Customer Support

Should you require any technical assistance, please contact your product reseller. Or you can visit our website at <http://www.hawkingtech.com> for latest product information.

Chapter2 Product Overview

2.1 Package Contents

Verify that nothing is missing from the package by using the checking list below. Please contact your dealer if anything is missing or damaged. All packing materials are recyclable. Please confirm the items in the package below:

- This Server (HMPS1u)
- CD (Hawking Multifunction Print Server setup software, User's Manual and Quick Installation Guide)
- Power Adaptor (5V/1A)

2.2 Product CD

This CD provides easy-to-use multifunction print server software, User's Manual and Quick Installation Guide.

2.2.1 Start-up Procedures

If your computer is configured to auto start CDs, this CD will start automatically when inserted. You can also navigate to the CD and start the autorun.exe file from within the Windows file manager.

2.3 Physical Description

1. **Power Adaptor Connector:** for DC IN 5V/1A power adaptor
2. **Init Button:** for restoring the parameters to the default values
3. **Ethernet Connector:** connected to a twisted pair category 5 cable
4. **USB Host Ports:** USB 1.1/2.0 low, full, and Hi-Speed compliant
5. **Indicators**
 - *Power Indicator* is lit while power is applied. If it is not lit, or if it blinks, there is a problem with this Server or power adaptor.
 - *Link Status* is lit while network is applied. If it is not lit, it indicates that this server does not connect to the network.
 - *Status Indicator* blinks to indicate network activity.
 - *LAN Indicator* blinks to indicate wired network activity. If it is lit, it indicates the wired network is applied. If it is not lit, it indicates that

- the server does not connect to the wired network.
- *USB Indicator* lit while a USB device connects to a USB Port of this Server. If it is not lit, or if it blinks, there is a problem with the USB device or this Server.

2.4 Supported USB Devices

The HMPS1u supports the following types of USB devices.

- USB Printer
- USB multifunction printer (MFP/ AIO)
- USB scanner
- USB storage (like USB external HD, flash disk, and digital camera)

Chapter3 Basic Installation

3.1 Connecting the Hardware

1. Make sure that your USB devices are switched off and that the Server's Power Adapter is disconnected.
2. Connect the USB devices to the USB ports with the USB cables.
3. Connect the Server to the network with a twisted-pair category 5 cable, 10baseT or 100baseTX.
4. Turn on the USB devices and make sure it is ready for use.
5. Connect the Power Adapter to the Server. The power indicator will light up and the USB indicator will flash in turn. When the Link indicator lights up, the Server is correctly connected to the network. When the USB indicator stops flashing, the Server starts to work normally.

3.2 Assigning an IP Address to the Server

3.2.1 Preliminary

- If you have a DHCP server on your network, your Server will receive an IP address automatically. The IP address will then appear on the *setup software* when it detects your print server. If your DHCP server does not give an IP address to the Server, the Server will use the automatic private IP addressing IP: 169.254.0.0. ~ 169.254.255.255
- If you are not working in a DHCP network, you need to manually set the Server's IP address.

3.2.2 IP Address

Unless you are assigning an IP address using DHCP, you must obtain an unused IP address from your network administrator.

3.2.3 Methods for Setting the IP Address

You can set the IP address of your Server using one of the following methods, depending on your network operating environment:

- Automatic IP Address Assignment
- Manual IP Address Assignment

3.2.4 Server Names and Server Name Rules

The default server name of the Server is "HMPS1U". If you put two or more Servers in your local area network, to avoid using the same server names you have to change the server names by using the setup software or the server's web pages. If your server name is longer than 15 characters, the server uses only the first 15 characters.

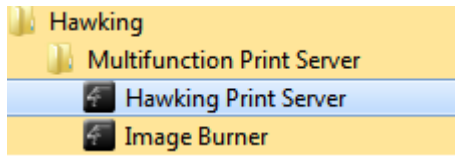
3.2.5 Setting the IP Address Using DHCP

Follow the instructions below to get an IP address using DHCP:

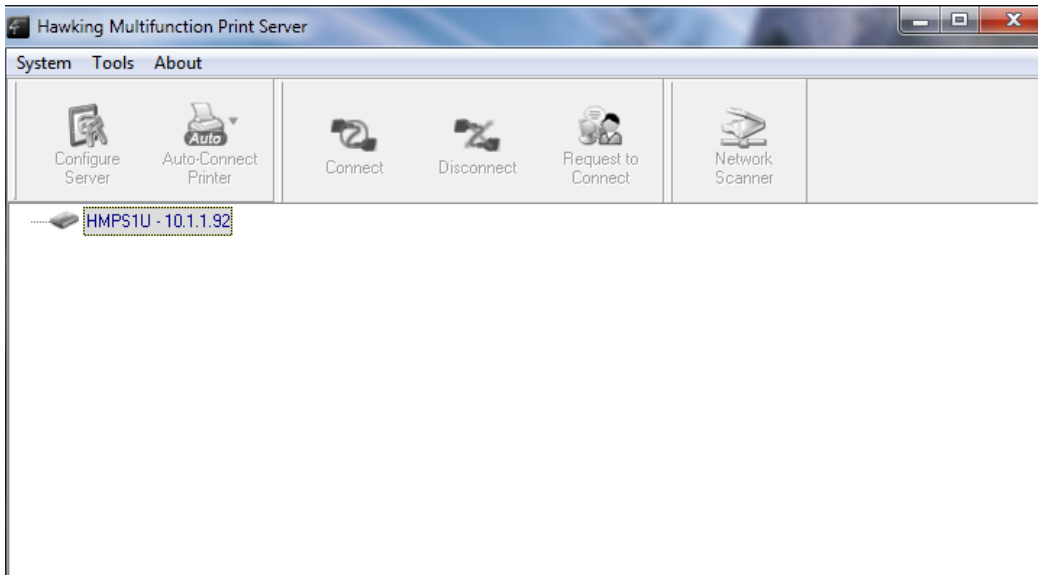
1. Edit or create a scope in the DHCP manager of the DHCP daemon. The entries included in this scope should contain the following parameters:
 - range of IP addresses
 - subnet mask
 - default router IP address
 - DNS server IP address
 - lease duration
2. Activate the scope. The Server automatically gets the DHCP parameters. If you are using DNS, you may include at least one DNS server IP address in the DHCP scope or manually set the DNS server IP address using Server's web pages or the HMPS1u's setup software.

3.2.6 Setting the IP Address Using the HMPS1u Software

1. Install the Setup Software. The Setup Software is available on the Product CD.
2. Start the Hawking Print Server software window will appear. It will appear until Start, Programs, Hawking, Multifunction Print Server



3. If the tool finds multiple Servers in your local area network, you will have to select one Server from the Server List.



4. Double click the highlighted server (or click the "Configure Server" button). This will open a web browser showing the web interface of the HMPS1u. Click the "CONFIG" button.

Welcome

- Click **STATUS** to show your system status.
- Click **CONFIG** to adjust each setting of the device.

Visit our website at www.hawkingtech.com for more information.

5. Login with administrator ID (default: admin) and its password (default: admin).

General			Administrator	Maintenance
Server Information				
Server Name	<input type="text" value="HMPS1U"/>	15 letters[max.]		
Workgroup	<input type="text" value="WORKGROUP"/>	15 letters[max.]		
Description (optional)	<input type="text"/>	48 letters[max.]		
Storage Access Mode				
<input type="radio"/> Server Mode				
<input checked="" type="radio"/> NetUSB Mode				
TCP/IP				
<input checked="" type="radio"/> Automatically get IP by DHCP				
<input type="radio"/> Static IP				
IP Address	<input type="text" value="1.0.0.0"/>	15 letters[max.]		
Subnet Mask	<input type="text" value="1.0.0.0"/>	15 letters[max.]		
UPnP Setting				
UPnP	<input checked="" type="radio"/> Enable	<input type="radio"/> Disable		
File Server Codepage				

6. Click the button corresponding to your choice of IP setting methods (static or dynamic using DHCP). When assigning a static IP address you also have to define Subnet Mask. The default IP of the HMPS1u is 192.168.1.100
7. Click Submit to save your settings. And the Server will reboot. You have now finished the procedure of setting the IP address.

Chapter4 Using the HMPS1u

4.1 Introduction

The goal of this product is to provide network support for USB devices. We developed a new technology called "NetUSB" to achieve this goal. Basically, the "NetUSB" is a "USB over IP" technology that transparently redirects all USB packets to a TCP/IP network channel. "NetUSB" allows you to use USB devices as if they were connected directly to your PC although they are actually remotely connected to the HMPS1u.

4.2 Connect & Disconnect

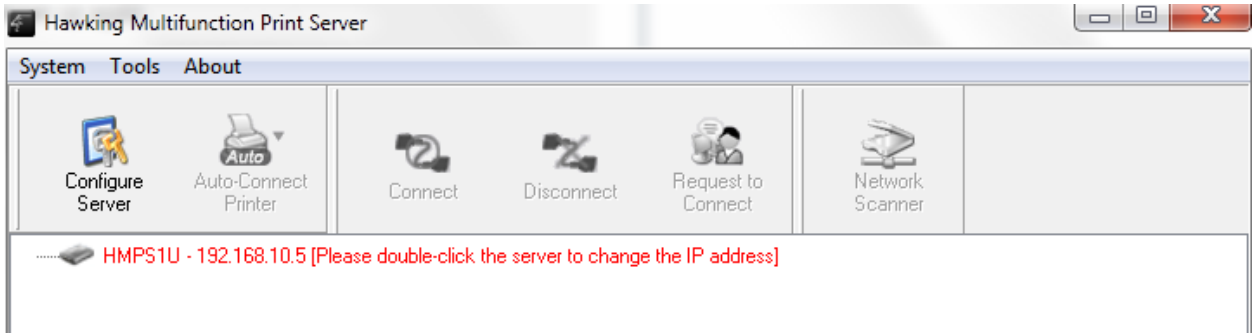
"NetUSB" allows you to use USB devices as if they were connected directly to your PC although they are actually remotely connected to the HMPS1u. The "connect" operation is a software operation that simulates an actual USB device plug-in. That is to say, when you do a "connect" operation in the HMPS1u setup software, the PC can then detect a USB device's plug-in, even though you did not physically plug in a USB device to your computer. Similarly, the "disconnect" operation is a software operation that simulates the disconnection of the USB device. Once the connect operation is successful, the operations to use that USB device are just the same as if the USB device is directly connected to the PC.

If a USB device is "connected" by a PC, we say that PC has the ownership of the USB device. Only one PC can get the ownership of a USB device at the same time. Therefore, if a USB device is connected by one PC, no other PC can connect this USB device until this USB device is disconnected.

4.3 Subnet Issue

Before using the NetUSB technology, you must first make sure that your PC can access the HMPS1u via TCP/IP. The simplest way to do this is using HMPS1u's setup software to search for the HMPS1u server on the network and change its IP address to be the same subnet as your PC. If the server and your PC are not in the same TCP/IP subnet, the HMPS1u's setup software will show the server in red, as shown in the following figure. You must change the IP address (or use DHCP) of the server so that the server and your PC are in the same subnet. The HMPS1u setup software will show these

servers in blue, meaning you can access these servers by the NetUSB technology.



4.4 Installation of a Printer/Multifunction Printer/Scanner

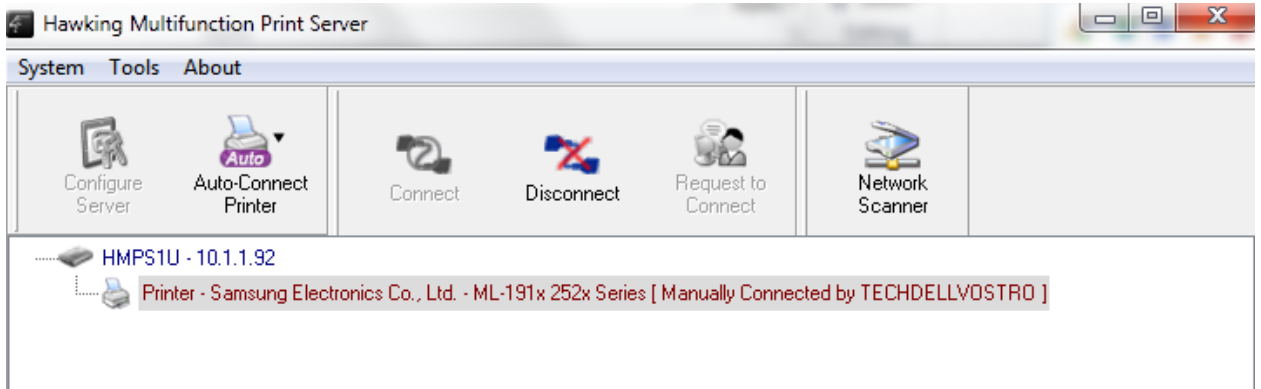
Some USB devices, like printers or MFPs (multifunction printers), require you to install manufacturer provided driver (usually included on the printer's CDROM).

- A. Insert the printer's CDROM into the CD drive and run the "install program".
- B. Follow the instructions of the installation program to install driver.
- C. When the installation program asks you to plug-in the USB device, run the "Hawking Print Server" software.
- D. In the "Hawking Print Server" software, select the HMPS1u that has the desired USB device attached.
- E. Click the desired USB device as the following figure.



- F. Click the "Connect" button. Then the message "Manually Connected by

your_computer_name" will be shown, as the following figure.



- G. Now, the installation program will detect the USB device and continue to install driver.
- H. After the installation is completed, click the USB device in the HMPS1u Software and then click the "Disconnect" button to disconnect the USB device.

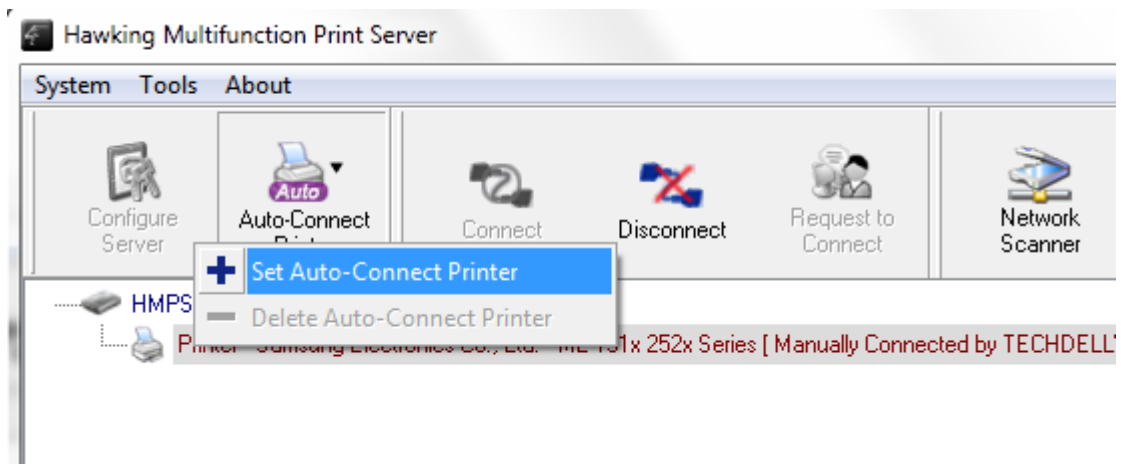
Now the driver of your USB device is installed.

4.5 Auto-Connect Printer

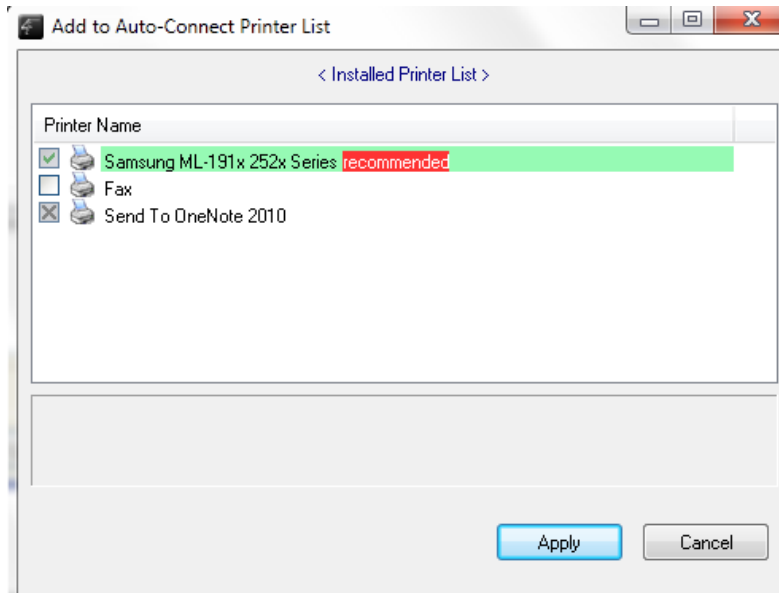
The method described in section 4.4 is called manual-connect, which means users must manually connect the USB printer before using that device, and must manually disconnect the USB printer device after using the printer, otherwise no one else can connect. However, for printers and scanners (and MFPs), the HMPS1u supports auto-connect so users don't need to manually connect/disconnect. This and the next sections show you how to do this.

After the driver is installed as described in section 4.4, you can see a newly created printer in the setup software's "Printers and Faxes". Follow the steps below to do a NetUSB auto-connect printing.

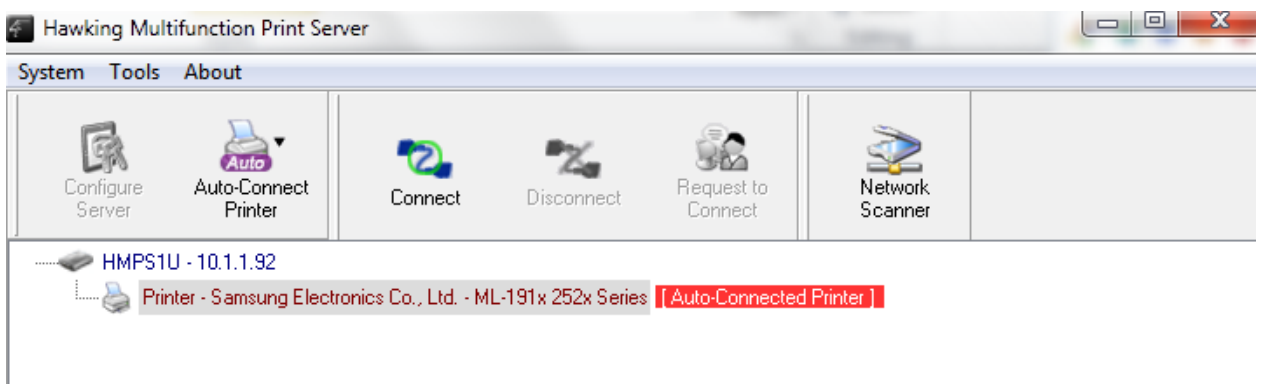
- A. In the HMPS1u software, click the USB device server that has the desired printer (or MFP) attached.
- B. Click the desired printer (or MFP).
- C. Click the "Auto Connect Printer" button and choose "Set Auto-Connect Printer".

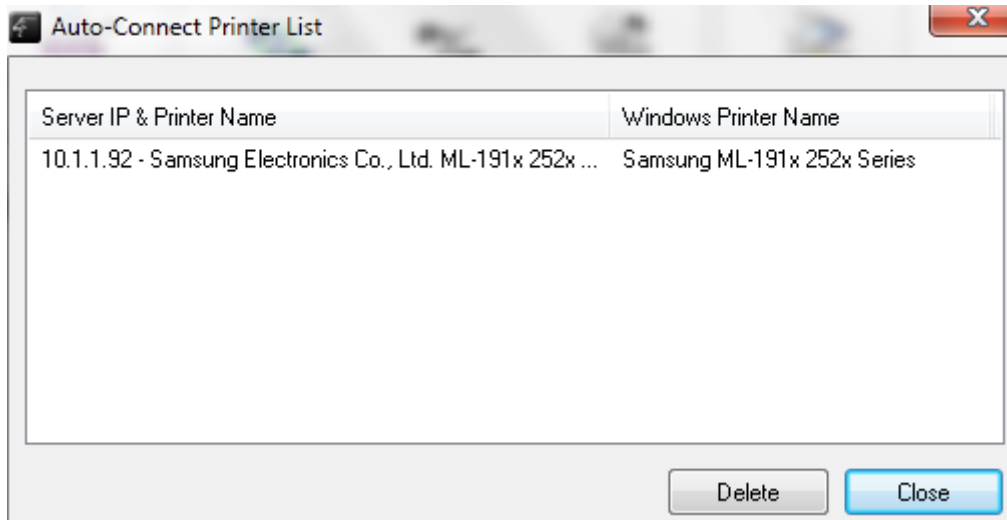


The following figure will appear.

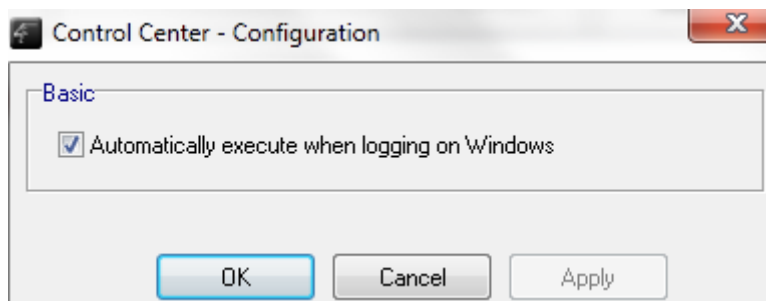


- D. Choose the desired printer. The desired printer must be the Windows printer (this is a logical printer) that matches the printer attached on the USB device server (this is a physical printer). Then click the “Apply” button.
- E. The printer will then be marked as an “Auto-Connected Printer” in red. If you choose “Auto-Connected Printer List” in the “Tools” menu, you can see a newly created item that describes the association between the Windows printer and the physical printer on the server.





- F. Try to issue a print job to the desired printer. You will see the HMPS1u will automatically do a connect operation and allow you to print.
- G. Even you already properly setup an auto-connected printer, the HMPS1u software must be running (in the background) while a print job is issued. This means you should have the HMPS1u software run every time after you login to Windows. In order to skip this manual operation, you can make the HMPS1u run automatically after you login Windows. To do this, choose the "Configuration" item in the "Tools" menu. The following window will appear. Click on the check box and then on the "OK" button. This feature is enabled by default.



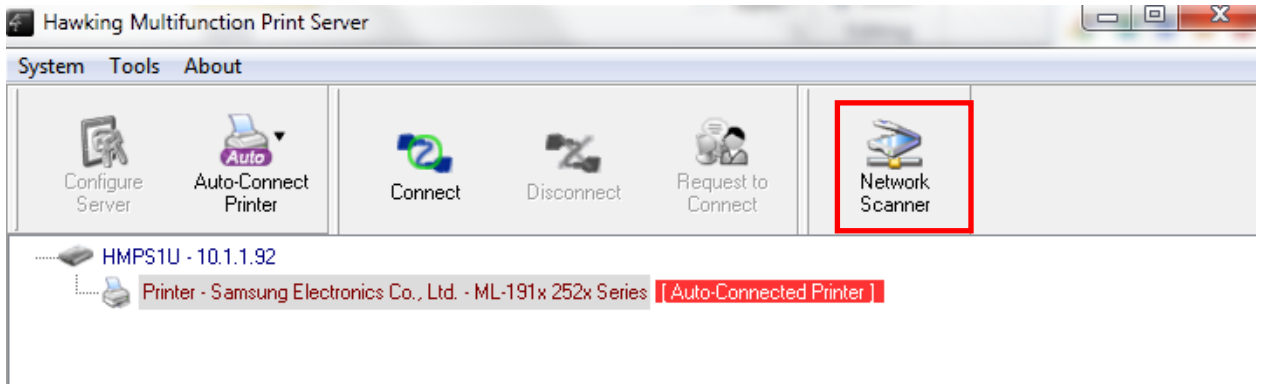
If you would like to break the association between the Windows printer and the physical printer, just click on the association and click the "Delete" button in the "Auto-Connected Printer List".

4.6 Network Scanner

For NetUSB scanning, we recommend you use Network Scanner as the

following steps.

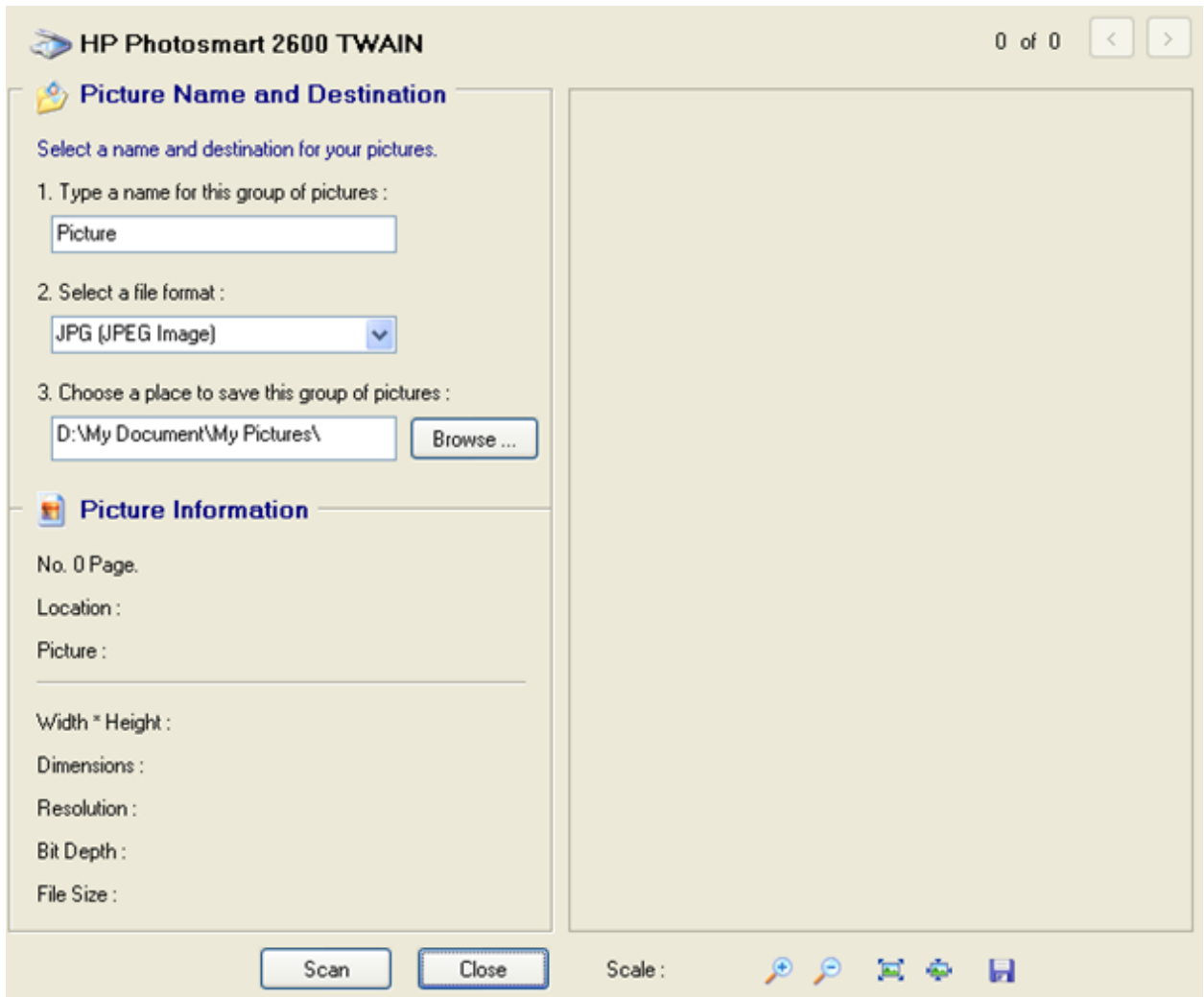
- A. In the HMPS1u software, click the HMPS1u that has the desired MFP (or scanner) attached.
- B. Click the desired MFP (or scanner).



- C. Click the "Network Scanner" button. Then you can see that the HMPS1u will automatically do a "connect" operation. The following window will appear.



- D. Choose one of TWAIN or WIA item. Click "OK". The following window will appear.

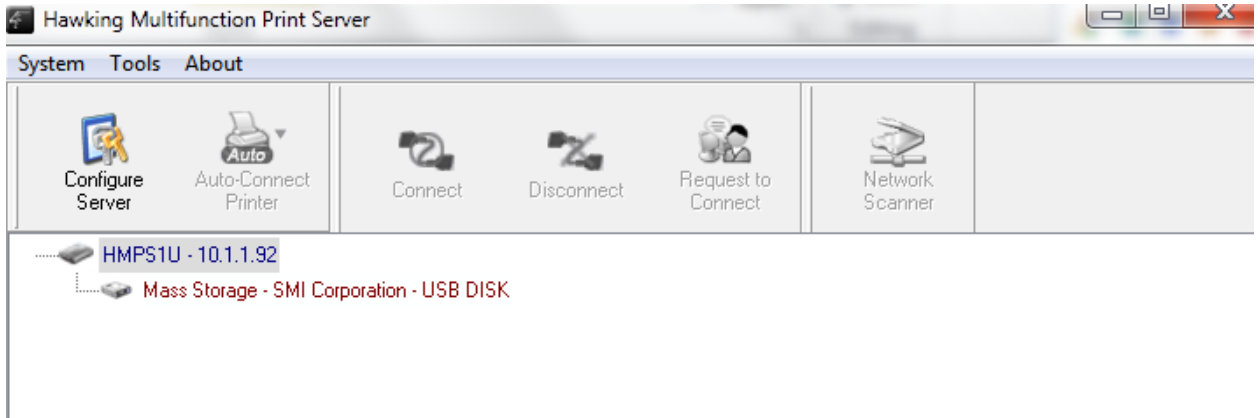


E. Follow the usual steps to do scanning.

F. After the scanning, close the "Auto-Connect Scanner" window.

4.7 USB Storage

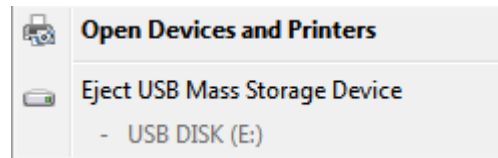
You must use "manually connect" for USB storage. If the USB storage is a flash drive, the new disk is a "removable disk".



You can see the storage icon in the system tray.



Then just use the new disk as a general disk. After you finish the disk operations, click the storage icon in the system tray and choose "Eject USB Mass Storage Device" to remove the USB storage, as the following figure.



Then, in the HMPS1u software, click the USB storage device and click the "Disconnect" button to disconnect the USB storage device.

4.8 Request to Connect

If a USB device is manually connected by another user on the network, you cannot use the device until they disconnect. We offer a mechanism to notify the other user. It is called "Request to Connect". The user on one computer can click the "Request to Connect" button in the HMPS1u software. The following window appears.



At this moment, the user on the other computer currently connected to the HMPS1u will see the following window:



The user will choose to accept or reject. If accepted, the HMPS1u user will automatically disconnect and the other user will automatically connect.

4.9 Quitting the HMPS1u Setup Software

The HMPS1u setup software doesn't really quit if you click the "X" box (close box) at the top right corner of the window. Instead, it just minimizes itself to the system tray. There are two ways to really close the software. The first way is choosing "Exit" item in the "File" menu in the software. The second way is right-clicking the icon of the software in the system tray and choosing the "Exit" item.

4.10 Limitations

There are some limitations to use the NetUSB technology.

- A. Only supports Windows 2000/XP/Vista/7/8/10. Windows 98/ME are not supported.
- B. Only one PC can get the ownership of the same USB device at the same time.

Chapter5 The Server's Web Pages

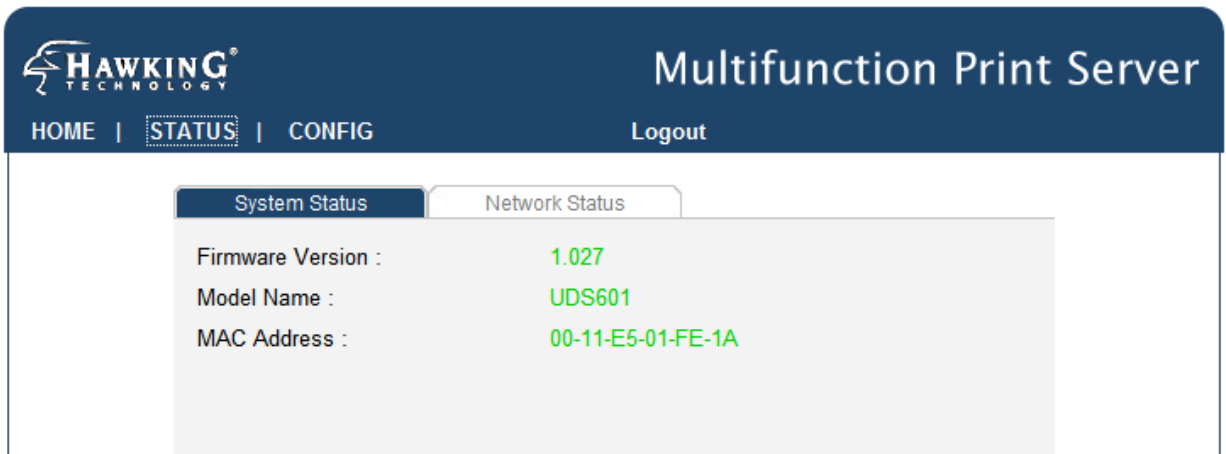
5.1 Introduction

The HMPS1u has a web user interface. Users may use the web pages to see the HMPS1u's system status and configure the device. You may access this page by running the HMPS1u's software and clicking configure or by directly typing in the IP address of the device into your web browser.

5.2 Using the Server's Web Pages

5.2.1 Displaying Server Status

Click on the "STATUS" icon to see system status and network status.



■ System Status

- ◆ Firmware Version: the current version of the firmware of the device
- ◆ Model Name: the model name of the product
- ◆ Mac Address: the machine address of the HMPS1u

[System Status](#)[Network Status](#)

Server Name :	HMPS1U
Storage Access Mode :	NetUSB Mode
IP Address :	10.1.1.192 (dhcp)
Subnet Mask :	255.255.255.0
DHCP Server :	10.1.1.1
Lease Time :	180000 second

■ Network Status

- ◆ Server Name: the network name of the HMPS1u
- ◆ Storage Access Mode: which storage mode the HMPS1u is in
- ◆ IP Address: the current IP address of the HMPS1u
- ◆ Subnet Mask: the current subnet mask of the HMPS1u
- ◆ DHCP Server: the gateway of the HMPS1u
- ◆ Lease time: if using DHCP, how long the IP address has been assigned.

5.2.2 Setting up Server Configuration

To set up the Server configuration, click on the "CONFIG" icon and then the system will request user to enter administrator (default: *admin*) and password (default: *admin*) to login.

■ General

Server Information: You have to set the Server Name, which is the name to represent the Server.

The screenshot displays the configuration page for a Multifunction Print Server. The top navigation bar includes 'HOME', 'STATUS', and 'CONFIG' (highlighted), along with a 'Logout' link. The main content area is divided into three tabs: 'General', 'Administrator', and 'Maintenance'. The 'General' tab is selected and contains several sections: 'Server Information' with input fields for 'Server Name' (HMPS1U), 'Workgroup' (WORKGROUP), and 'Description (optional)'; 'Storage Access Mode' with radio buttons for 'Server Mode' and 'NetUSB Mode' (selected); 'TCP/IP' with radio buttons for 'Automatically get IP by DHCP' (selected) and 'Static IP', and input fields for 'IP Address' (1.0.0.0) and 'Subnet Mask' (1.0.0.0); 'UPnP Setting' with radio buttons for 'Enable' (selected) and 'Disable'; and 'File Server Codepage'.

© 2011 Hawking Technology, Inc. All rights reserved.

- ◆ **Server Name:** The network name of the HMPS1u.
- ◆ **Workgroup:** The workgroup name of the HMPS1u
- ◆ **Description:** This is an optional setting so you can put in a description of the device for your network settings.

Storage Access Mode: allows for the USB hard drive configuration

- ♦ **Server Mode:** Allows multiple computers in your network to connect to the USB storage device at the same time. Device will appear on the network as a shared drive.
- ♦ **NetUSB Mode:** Only allows on computer at a time to access the drive.

TCP/IP

- ♦ **TCP/IP:** You have to set the Server's TCP/IP configuration to connect TCP/IP network. Please see Chapter 3.2 for more details.

UPnP Setting: Enable or disable the UPnP function.

- **Administrator:** You can change administrator name and password. If you forgot administrator name and password, you must perform Restore Factory Default action by plugging in the power adaptor while pressing the Init button. Please refer to the chapter "Restore Factory Defaults".
 - ♦ **Administrator:** enter your desired administrator name.
 - ♦ **New Password:** enter your desired password.
 - ♦ **Re-type Password:** re-confirm the password.

General **Administrator** Maintenance

Set Administrator

Administrator	<input type="text" value="admin"/>	15 letters[max.]
New Password	<input type="text"/>	15 letters[max.]
Re-type Password	<input type="text"/>	15 letters[max.]

User Account List

User Name	<input type="text"/>	Password	<input type="text"/>
Permission	<input type="text" value="Read Only"/>	<input type="button" value="Add"/>	<input type="button" value="Delete"/>
User Name	Password	Permission	

User Name	Password	Permission
<div style="border: 1px solid gray; height: 40px;"></div>		

- **Maintenance** If you want to restore factory default values of the Server or upgrade new firmware, you can use the Maintenance tool.
 - ◆ **Restart:** click this button to restart (reboot) the Server.
 - ◆ **Factory Default:** click this button, the Server will restore factory default values.
 - ◆ **Firmware Upgrade:** click **Browse** to find the firmware file to be upgraded. Click **Upload** to upload the firmware into the Server.



Multifunction Print Server

HOME | STATUS | CONFIG

Logout

General

Administrator

Maintenance

Restart

Factory Default

Download New Firmware

Firmware Upgrade

General

Administrator

Maintenance

Upgrade Firmware

New Firmware File

Browse_

Upload

Cancel

Chapter6 Troubleshooting

This chapter provides useful information to help you resolve difficulties that you may experience with your Server. Fault symptoms, possible causes, and remedial actions are provided within a quick reference table. This Server’s USB ports only support MFPs, printers, scanners, and USB mass storage.

6.1 LED Indicators

Indicators	Behavior	Description
Power	On	Power On
	Off	Power off/System error
Link	On	Network connected
	Off	No physical connection to network
Status	Blinking	Activity on network
	Off	No activity on network
USB	On	USB device connected
	Blinking	Connected USB device error
	Off	No physical connection to USB device

6.2 Firewall

If firewall software has been installed on your PC, it may block the communication between the PC and the HMPS1u so that the HMPS1u cannot work properly. To solve this problem, either disable the firewall or configure the firewall to allow the following TCP and UDP ports:

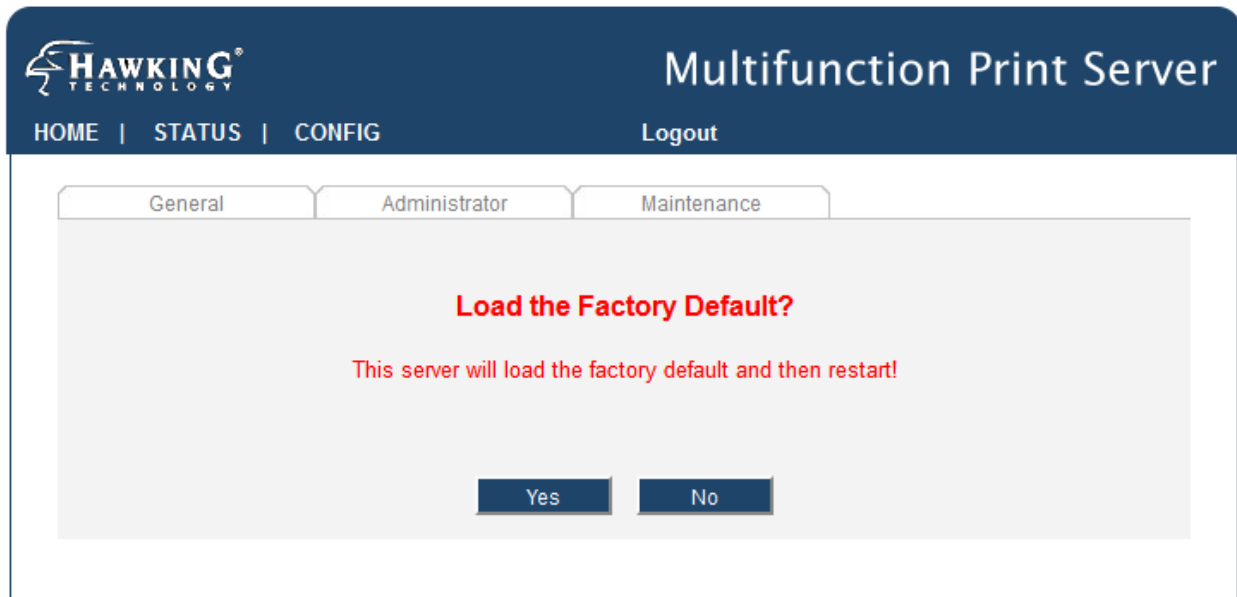
7303, 7305, 20005, 30201, 30202, 30203

Chapter7 Restore Factory Defaults

You may restore the HMPS1u default parameters by one of the following methods.

7.1 Using the Server's Web Pages

1. Go to the Server's web page and click **CONFIG**
2. Enter administrator (default: *admin*) and password (default: *admin*).
3. Click **Maintenance**.
4. Click **Factory Default**.



5. Click **Yes** to confirm

7.2 Using Init Button

Plug in the power adaptor while pressing the Init button until the USB indicators blink. After that, plug off the power adaptor and then plug in the

power adapter again to restart the Server. Finally, the Server will operate using the Factory Default values.

7.3 Default Parameters List

General Information

- Server Name: **HMPS1u**

TCP/IP

- Automatically get IP by DHCP: **Enabled**
- Static IP: **Disabled**
 - IP Address: **192.168.1.100**
 - Subnet Mask: **255.255.255.0**

User Accounts

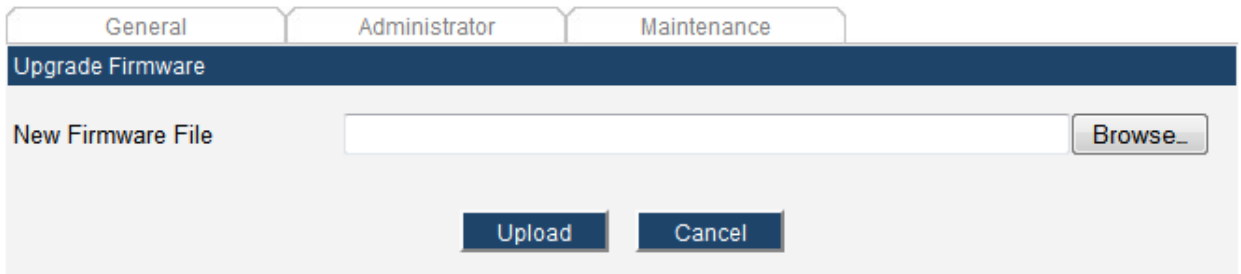
- Administrator: **admin**
- Password: **admin**

Chapter8 Upgrade Firmware

This chapter describes how to upgrade firmware. Please follow one of the following Procedures:

Procedure A: Using the HMPS1u Software

1. Download the firmware from www.hawkingtech.com. Save the firmware to your desktop.
2. Open the HMPS1u setup software. It will automatically search the existing Servers and display their statuses.
3. Select the Server that you want to upgrade the firmware. Double click the selected Server to get into the HMPS1u's web page. Check the system status page to make sure you need an upgrade.
4. Click CONFIG icon.
5. Login the Server with Administrator (default: admin) and Password (default: admin).
6. Click Maintenance.
7. Click Upgrade Firmware.



The screenshot shows a web interface with three tabs: 'General', 'Administrator', and 'Maintenance'. The 'Maintenance' tab is active, and the 'Upgrade Firmware' section is highlighted. Below the tabs, there is a 'New Firmware File' label, a text input field, and a 'Browse...' button. At the bottom of the section, there are two buttons: 'Upload' and 'Cancel'.

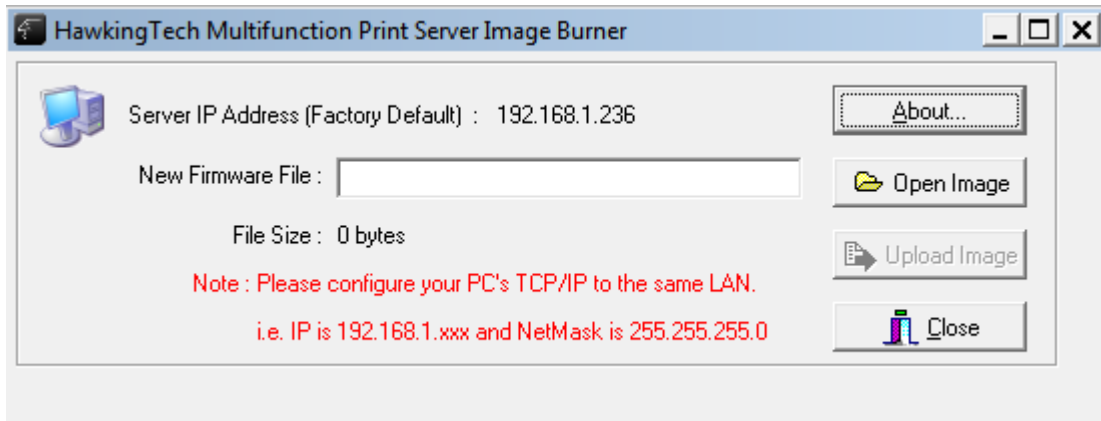
8. Click Browse button to choose the file of new firmware.
9. Click Upload button to start firmware upgrade.
10. Wait for 20 seconds for system reboot.

Procedure B: Using the Init Button and the TFTP Client

1. Plug in the power adaptor while pressing the Init button until the USB LED indicator blink. **Please note that after that, the HMPS1u will**

operate using the factory default values after restarting.

2. Run the TFTP client Tool: *Image Burner*, from Windows Start menu.
3. Click **Open Image** to open your new firmware. Please note that you must configure your PC's TCP/IP such that PC and the HMPS1u belong to the same LAN, i.e. PC's IP is 192.168.1.xxx and subnet mask is 255.255.255.0.



4. Click **Upload Image**.
5. Wait for **Image Uploading** to finish and then click **Close**.
6. Unplug the power adapter and then plug-in the power adapter to restart the HMPS1u.

Chapter9 The Init Button

The Init button is used for maintenance: Simultaneously press **Init** button and turn on (by plugging in the power adaptor) the HMPS1u until the USB LED indicator simultaneously blink. After that, the HMPS1u will do the following tasks:

- A. Perform a Factory Default restoration of the HMPS1u, which will restore most of the parameters and settings to factory default values.
- B. Perform a TFTP server. You can upgrade new firmware using any TFTP client tool.

Note: After performing the tasks mentioned above, you have unplug and then plug in the HMPS1u so it will complete the task.