



# 1-PORT USB 2.0 PRINT SERVER for MULTIFUNCTION PRINTERS



website [www.hawkingtech.com](http://www.hawkingtech.com)  
e-mail [techsupport@hawkingtech.com](mailto:techsupport@hawkingtech.com)

© COPYRIGHT 2007 HAWKING TECHNOLOGIES, INC. ALL RIGHTS RESERVED.

## HMPS1U

## QUICK INSTALLATION GUIDE





# STEP 1 GETTING STARTED

## Check Package Contents for:

- 1.) One 1-Port USB 2.0 Print Server for Multifunction Printers (HMPS1U)
- 2.) Setup CD with Print Control Center Software
- 3.) One DC Power Adaptor
- 4.) One Quick Installation Guide (QIG)

## System Requirements:

- Windows 2000 / XP / 2003 / Vista

## What You Will Need to Get Started:

- 1.) One USB Printer/All-in-One/Multifunction Printer or USB Scanner or Storage Device
- 2.) A Computer with a CD-ROM drive that is connected to your home network
- 3.) One Ethernet cable
- 4.) One USB cable





# PRODUCT OVERVIEW

## STEP 1



Top View

LEDs:

- 1.) Power: Lit when powered on
- 2.) Link: Lit when server is linked to a network
- 3.) Active: Blinks to indicate network activity
- 4.) USB: Lit when USB device is connected to USB port

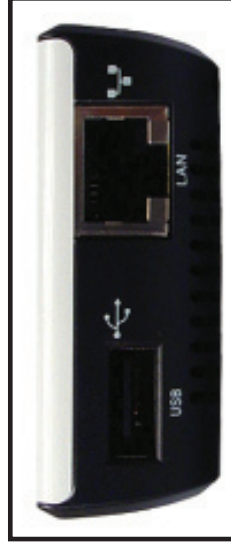
1 2 3 4



Left Side View

- 5.) Power Adaptor Connector: DC IN 12V/1A adaptor
- 6.) Init Button: restores the configurable parameters to the default values

5 6



Right Side View

- 7.) USB Host Port: USB 1.1/2.0 low, full, and Hi-Speed compliant; connects to USB device
- 8.) Ethernet Connector: Connects to network router/switch

7 8





## STEP 2 HARDWARE INSTALLATION

Step 2: Connecting Your Server to a Network

- 1.) Use the Ethernet cable and connect one end to the “LAN” port of the HMP51U Print Server. Connect the other end to an available LAN Port on your network router. See Fig. 1 and 2
- 2.) Connect the HMP51U Server to your All-in-One/Multifunction Printer using a USB cable (not included).
- 3.) Plug in the power adaptor (included in package) to power on the print server.
- 4.) Once powered on, check the server’s LEDs to ensure that the server is indeed working and connected to network devices and printers.



Figure 1



Figure 2





# SOFTWARE INSTALLATION

## STEP 3

### Step 3: Installing Software Utility

- 1.) Insert Hawking software Setup CD (included in package) to desired client computer and run CD .
- 2.) When the auto-load page appears, click Install Wizard. See Fig. 3. If the autoloader page does not appear, click Start--> Computer--> CD/DVD Drive--> autoloader.exe.



Figure 3

- 3.) Click Next button in proceeding installation windows (See Fig. 4) until a Finish button appears, and then click Finish. See Fig. 5

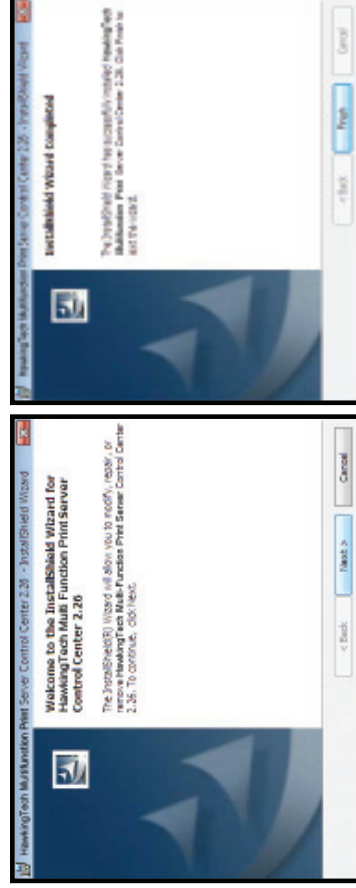


Figure 4

Figure 5





## STEP 4 SERVER CONFIGURATION

### Step 4: Configuring Your HMPS1U Print Server with Utility

- 1.) Open the Hawking Technologies HMPS1U Server Control Center from the desktop icon. While the program is running, a Hawking icon should also be displayed in your system tray (See Fig. 6) if software installation was successful. Once open, it will automatically search for the existing server and display its status.



Figure 6

- 2.) Double click the HMPS1U Server and log in to the Control Center by entering Administrator (default: admin) and Password (default: admin). See Fig. 7



Figure 7





# SERVER CONFIGURATION

## STEP 4

Step 4: Configuring Your HMPS1U Print Server with Utility

- 3.) Once logged in, the Control Center should open up to a General Configuration page. The default name for Server Name should be “HMPS1U” and the Workgroup name should be “WORKGROUP”. If you would like to change the names, please do so now. See Fig. 8
- 5.) Next, click on the TCP/IP tab located next to the General Configuration tab.

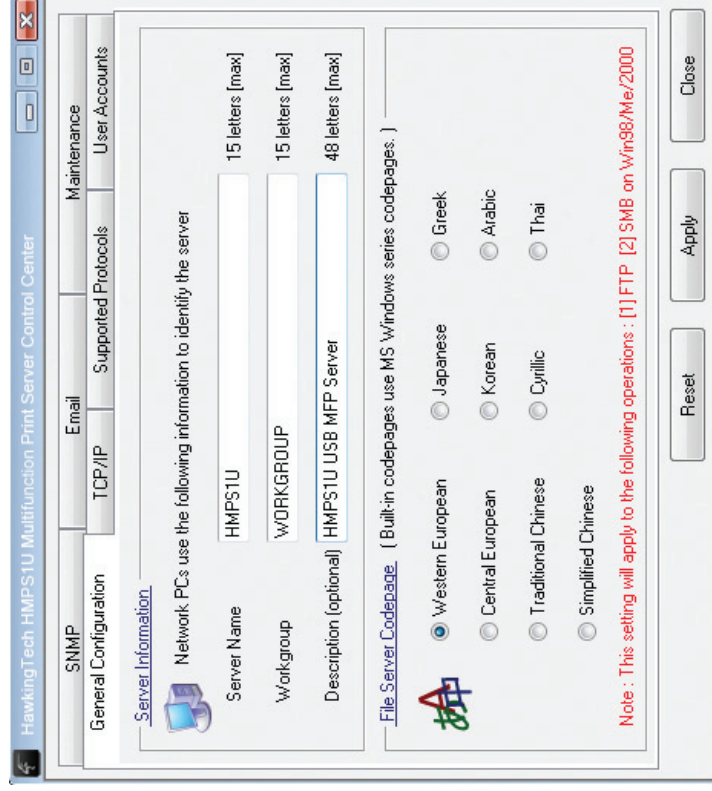


Figure 8





## STEP 4 SERVER CONFIGURATION

Step 4: Configuring Your HMPS1U Print Server with Utility Cont'd

5.) In the TCP/IP tab, choose "Automatically get IP by DHCP". If the automatic IP address fails, and you know the IP address of your server, choose Static IP and enter the IP address manually. See Fig. 9



Figure 9

6.) Once you are finished setting the IP address, click the close button in the lower right hand corner.

7.) To begin printing, continue on to "How to: Print" in Step 5.  
To access the scanner, go to Step 6. To access USB storage see Step 7.







## HOW TO: PRINT

### STEP 5

#### Step 5: Printing with Your HMPS1U Print Server

- 1.) Beginning in the Server Control Center, click on the HMPS1U Print Server. The connected printer should show up beneath the Server. See Fig. 10
- 2.) Highlight the printer that shows up by clicking on it once and then click the Connect button in the Control Center. See Fig. 11
- 3.) Once connected, a text next to the right of the highlighted printer should read: [Manually Connected by... (your computer's name)]. See Fig. 12



Figure 10



Figure 11

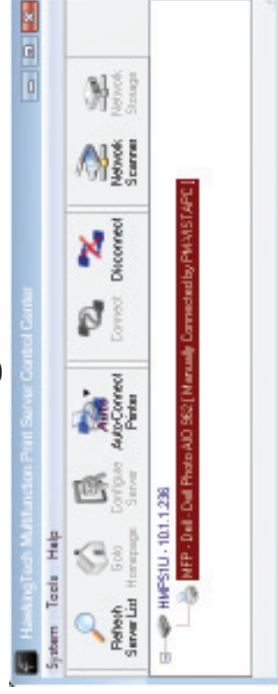


Figure 12





## STEP 5 HOW TO : PRINT

Step 5: Printing with Your HMPS1U Print Server

4.) (Optional) If your printer's driver is not installed, Windows will ask you to install the software by opening a Found New Hardware Wizard window. See Fig. 13 and 14 for XP and Fig. 15 for Vista.

For Windows XP:

4a.) In the area that asks if Windows can connect to Windows Update to search for software select the option: "Yes, this time only" and click Next. See Fig. 13

4b.) In the next window, first insert the CD software that came with you printer, and then choose the option that says: " Install the software automatically" and click Next until the software installation is completed.



Figure 13

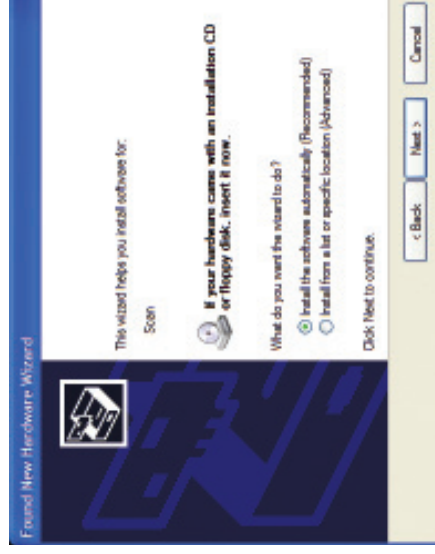


Figure 14





## HOW TO: PRINT

## STEP 5

### Step 5: Printing with Your HMPS1U Print Server

For Windows Vista:

- 4c.) Select the option that says: “Locate and Install driver software”. Windows Vista will then search for and download the needed print drivers.
- 5.) Once all drivers are installed, finish and close all Found New Hardware Wizard windows and make sure your Printer is still connected to your Print Server as in Fig. 12 above, and then print as you would normally do so.

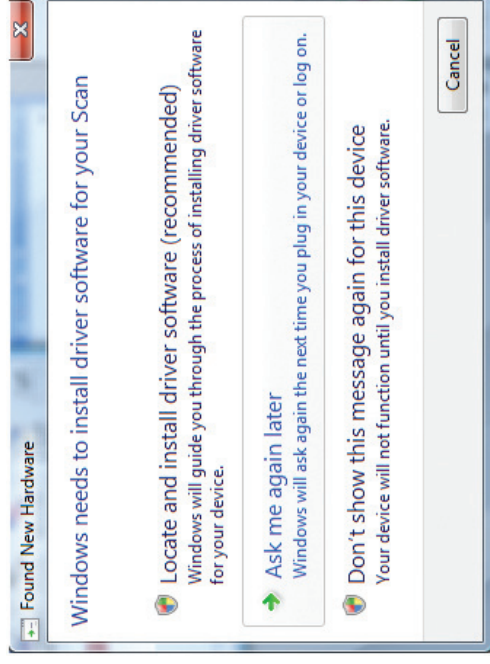


Figure 15





## STEP 5 HOW TO : PRINT

### Step 5: Printing with Your HMPS1U Print Server

**NOTE:** To allow more computers in your network to access the shared printer, you must first disconnect your computer from the Server by manually pressing the Disconnect button in the Control Center, as it can only serve one computer at a time. To connect and disconnect automatically before and after print jobs, set the Server to auto-connect to the printer by following these steps:

- 1.) Make sure all computers wanting to use the shared printer are connected to the network and have installed the software utility from the Setup CD by following Steps 3 thru 5.
- 2.) In the Control Center click on the printer to highlight it as in Fig. 11. Then click the “Auto-Connect Printer” button in the Control Center panel. Select “Set Auto-Connect Printer”. See Fig. 16.
- 3.) When the “Add to Auto-Connect Printer List” appears, select the desired printer and then click “Apply”. See Fig. 17.



Figure 16

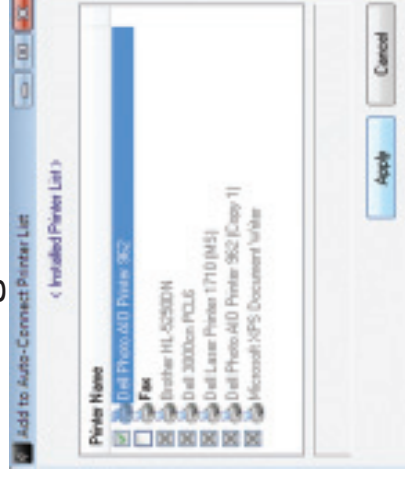


Figure 17





## HOW TO : ACCESS SCANNER

### STEP 6

Step 6: Scanning with Your HMPS1U Print Server

- 1.) In the Control Center, click on the HMPS1U Print Server. The Multifunction Printer/Scanner that is connected to it should appear beneath it. See Fig. 18
- 2.) Click on the desired Multifunction Printer/Scanner. See Fig. 19

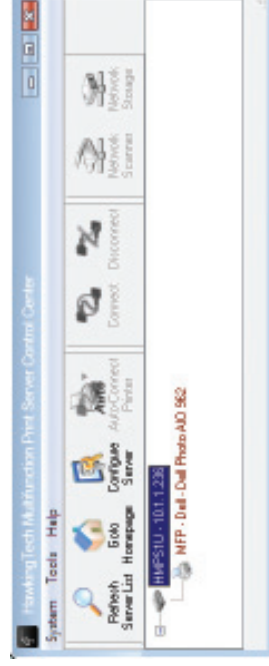


Figure 18

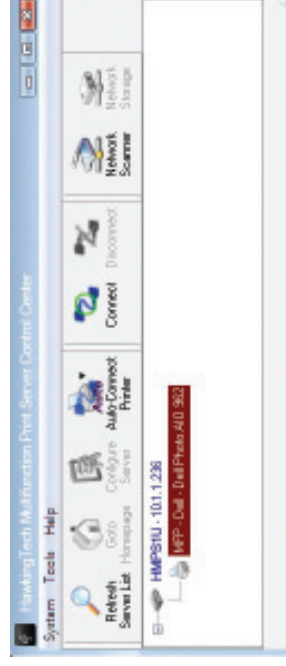


Figure 19





## STEP 6 HOW TO: ACCESS SCANNER

Step 6: Scanning with Your HMPS1U Print Server

- 3.) Click the Network Scanner button. The following window will appear. See Fig. 20
- 4.) Choose either the TWAIN or WIA item. Click OK. The following window will appear. See Fig. 21
- 5.) Proceed to scan as you would normally do so.



Figure 20

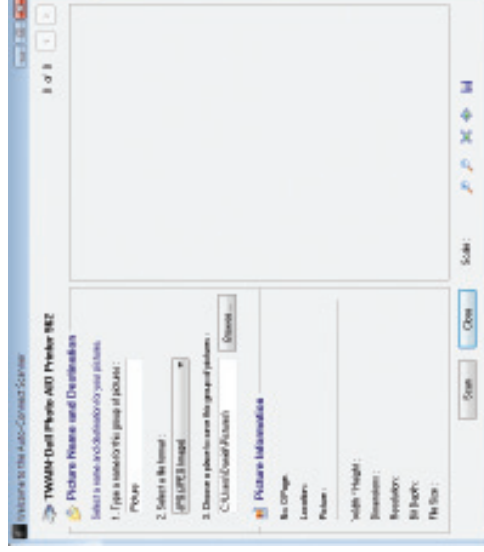


Figure 21





## HOW TO: ACCESS SCANNER

### STEP 6

#### Step 6: Scanning with Your HMPS1U Print Server

**NOTE:** To allow more computers in your network to access the scanner, you must first disconnect your computer from the server by pressing the Disconnect button in the Control Center, as it can only serve one computer at a time. Then, follow these steps:

- 1.) Make sure the computer you are using is connected to the network.
- 2.) Insert the HMPS1U Setup CD.
- 3.) Install Software.
- 4.) Repeat steps 1 thru 5 in “How to: Access Scanner” section.



# STEP 7

## HOW TO: ACCESS USB STORAGE

### Step 7: Accessing USB Storage

- 1.) Before you access USB storage, please make sure the storage access mode is set to NetUSB Mode under the Supported Protocols tab in the Control Center. To change this setting, double click the HMP51U Print Server and log into the Control Center by entering Administrator (default: admin) and Password (default: admin). See Fig. 22
- 2.) Once logged in, select the tab titled Supported Protocols. Under Storage Access Mode, select NetUSB Mode and then click on Apply. See Fig. 23



Figure 22

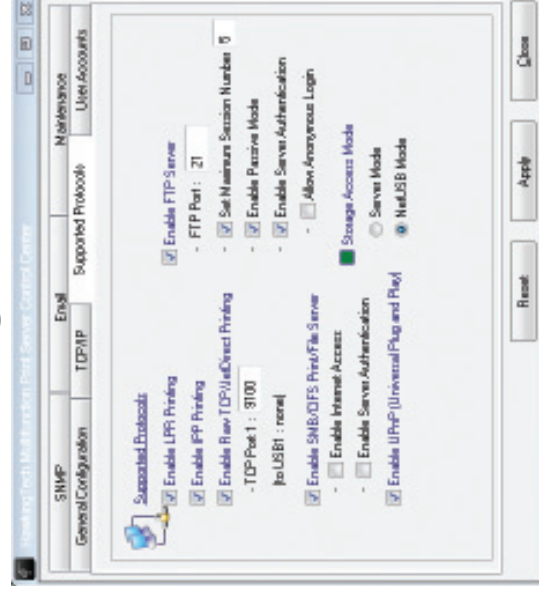


Figure 23





## HOW TO: ACCESS USB STORAGE

### STEP 7

Step 7: Accessing USB Storage

- 3.) In the Control Center, click on the HMP51U Print Server. The USB storage device attached should appear beneath it.
- 4.) Select the desired USB storage device by clicking on it once and then click the Connect button. See Fig. 24
- 5.) Now your PC will have detected a new disk. For example, if you connected a flash drive, your PC will have a new “removable disk”. You should see the storage icon in the system tray, as in the following figure. See Fig. 25
- 6.) Use the disk as you normally would if it were directly plugged into a USB port on your computer.

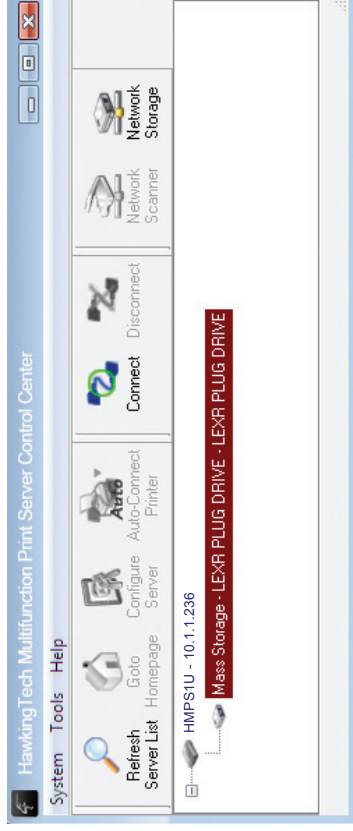


Figure 24



Figure 25





# STEP 7

## HOW TO: ACCESS USB STORAGE

Step 7: Accessing USB Storage

7.) After you finish the disk operations, click the storage icon in the system tray and choose "Safely remove USB Mass Storage Device". See Fig. 26

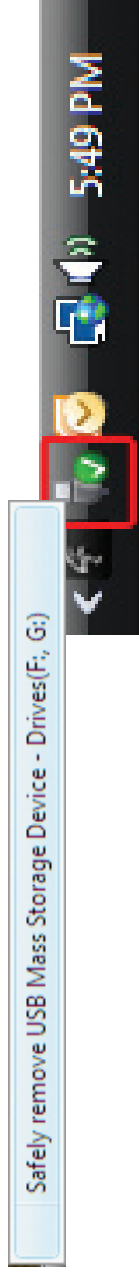


Figure 26

8.) In the Control Center, click the Disconnect button to disconnect the USB storage device.





# HOW TO: ACCESS USB STORAGE

## STEP 7

### Step 7: Accessing USB Storage

**NOTE:** To allow multiple computers in your network to access the shared USB storage, you must first disconnect your computer from the server by pressing the Disconnect button in the Control Center, as it can only serve one computer at a time in NetUSB Mode. Then, follow these steps:

- 1.) Make sure the computer you are using is connected to the network.
- 2.) Insert the HMPS1U Setup CD and Install Software.
- 3.) Repeat steps 1 and 2 of “Accessing USB Storage”, but instead of selecting NetUSB Mode in step 2, select Server Mode.
- 4.) Proceed through step 3. For step 4, click the Network Storage button located in the Control Panel. Your storage device should open up and be shown to be on the shared network.





## DEFAULTS

## DEFAULT PARAMETERS

Some of the important default parameters for your HMPS1U are shown below.

- Administrator: admin
- Password: admin
- Server Name: HMPS1U
- Workgroup: WORKGROUP
- Static IP: 192.168.1.100
- DHCP: enabled





## TECHNICAL SUPPORT

## CONTACT

For additional information or troubleshooting help regarding the advanced usage and configuration of your device, please refer to the User's Manual on the Setup CD.

If you have technical difficulties using the product, Hawking Technologies offers free technical support to assist you.

Toll Free (US and Canada): 888.202.3344

International Calls: 949.790.0810

Website: <http://www.hawkingtechnologies.com/support.php>

RMA Information (for Warranty Issues>Returns)

Website: <http://www.hawkingtech.com/rma.php>

Thank You for Choosing Hawking Technologies!  
[www.hawkingtech.com](http://www.hawkingtech.com)

