



● HGS16S

- Sixteen 10/100/1000M Auto-sensing Ports**
- Up to 2000Mbps Speeds in Full Duplex mode**
- 19" 1U Rack Mount**
- Easy to Install and Use**

PACKAGE CONTENTS:

- ◆ One HGS16S 16-Port Gigabit Switch
- ◆ One 19" Rack Mount Kit
- ◆ Four Rubber Feet with Adhesive Backing
- ◆ One Power Cord
- ◆ One RS-232 Cable
- ◆ One setup CD
- ◆ One Quick Installation Guide



Fast and Easy Networking

The Hawking HGS16S is an ideal solution for workgroup and enterprise users, and is designed for easy installation, high performance, and seamless migration between 10Base-T, 100Base-TX, and 1000Base-T network speeds. The switch includes (16) 10/100/1000M auto-negotiation, auto-MDI/MDIX ports and provides a flexible, reliable, and affordable solution for an Ethernet network. Each port delivers up to 2000Mbps throughput, which can give workstations a larger, congestion-free data pipe for simultaneous access to the server or backbone. The HGS16S features embedded advanced management capabilities: the device can be managed via a web-based user interface or console port, thereby allowing the system manager to monitor and control the system efficiently. The N-Way auto-negotiation (or auto-sense) function automatically adjusts the device for optimum operation, and store-and-forward architecture filter allow for low latency, eliminate error packets, and improved efficiency. In addition, the HGS16S can be expanded by cascading two or more switches together. The switch is also ideal for micro-segmenting large networks into smaller, connected subnets for improved performance, thereby enabling the bandwidth required by today's network for increasingly demanding applications of all kinds. The switch is plug-and-play with no software to configure, and the built-in universal power supply lets you easily install the switch without an external power adapter.

Features

- ◆ Sixteen (16) fixed 10/100/1000M Auto-negotiation, Auto-MDI/MDIX Gigabit Ethernet ports
- ◆ Provides 4K MAC address entries
- ◆ Supports up to 8 groups (of up to 8 ports each) port aggregation
- ◆ Supports QoS for enhanced network management
- ◆ Supports full duplex flow control and half duplex back pressure
- ◆ Store-and-forward forwarding scheme
- ◆ Supports 272K buffer memory
- ◆ Supports local Console Port or Web-based UI for configuration

Network Requirements:

- ◆ IEEE 802.3 10Base-T, 100Base-T, or 1000Base-T Ethernet

CONNECT WHEREVER YOU WANT · WHENEVER YOU WANT

CAREFREE NETWORKING



HGS16S

High Speed Wired Data Transmissions
Sixteen 10/100/1000M Auto-sensing
RJ-45 Ethernet Ports
Two Year Warranty

RELATED PRODUCTS:

- HGS5T** 5-Port Gigabit Network Switch
- HGS8T** 8-Port Gigabit Network Switch
- HGS16S** 16-Port 10/100/1000M Rack Mount Switch
- HGS24S** 24-Port 10/100/1000M Rack Mount Switch
- HS2G24T** 2-Port 10/100/1000M + 24-Port 10/100M Auto-sensing Switch

SPECIFICATIONS

Network Standards Supported

- IEEE802.3 10BASE-T
- IEEE802.3u 100BASE-TX
- IEEE802.3x full-duplex operation and flow control
- IEEE802.3ab 1000BASE-T
- IEEE802.1Q VLAN interoperability
- IEEE802.1p Traffic prioritization

Interface

- (16)10/100/1000Mbps auto MDI/MDI-X RJ-45 Auto-switching ports
- (1) RS-232 Console port

Cable Connections

- RJ-45 (10BASE-T): Category 3,4,5 UTP/STP
- RJ-45 (100BASE-TX): Category 5 UTP/STP
- RJ-45 (1000BASE-T): Category 5,5e or enhanced UTP/STP

Network Data Rate

- 10/100/1000Mbps Auto-negotiation

Transmission Mode

- 10/100Mbps Full-duplex, Half-duplex
- 1000Mbps Full-duplex

Memory

- 4K MAC entries
- 272K Buffer Memory

Operating Temperature

- 0~50°C (32°~122°F)

Operating Humidity

- 10% - 90% non-condensing

Power

- Internal power supply: 5V 8A 100-240V/ 50-60H

Certifications

- FCC Part 15 Class A
- CE mark Class A

HAWKING TECHNOLOGIES, INC

USA: Irvine, California

Website: www.hawkingtech.com

Email: sales@hawkingtech.com

Tel: 888.662.8828, 949.790.0800

Europe: Rotterdam, The Netherlands

Website: www.hawkingeurope.com

Email: sales@hawkingeurope.com

Tel: 31.10.245.1600

READY, NETWORK & GO!

It's easy to install, it's easy to use!

Step 1 - Power On the Switch!

Power on the switch by connecting the power cord.

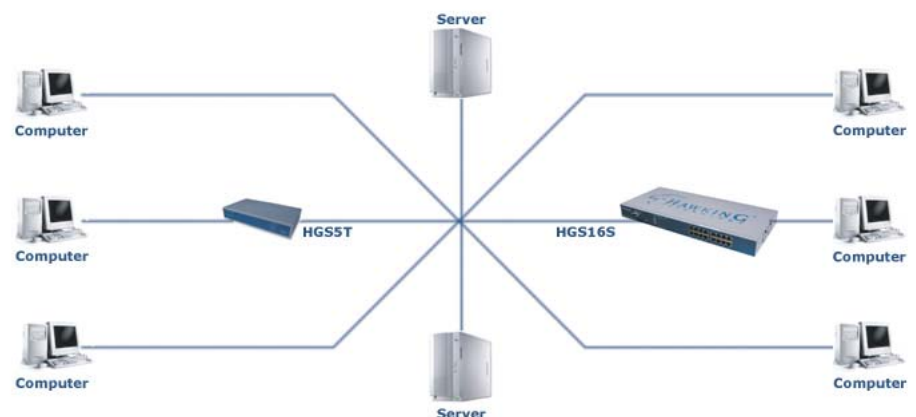
Step 2 - Connect Computers, Servers, etc.

Connect computers, servers, or other appropriate devices to the Ethernet-ports on the switch.

Step 3 - Get Started

Power on the attached computers, servers, and other devices. Ensure that the switch's IP address is compatible with your network, and you're ready to go!

WIRED NETWORK DIAGRAM:



Product Features

16 full-duplex copper Gigabit ports with standard RJ-45 connectors:
 Plug in a standard Ethernet cable to one of the HGS16S' RJ-45 Ports.

10/100/1000Mbps auto-sensing
 The HGS16S will detect your network speed setting to give you the best possible network performance.

Compatible with IEEE802.3ab 1000Base-T, IEEE802.3u 100BASE-TX, IEEE802.3 10BASE-T, IEEE802.3x flow control
 The HGS16S is compatible with any standardized 10/100 or 1000M NIC, Hub, or switch allowing you to connect to your existing network worry-free.

Wire-speed Filtering and Forwarding

The HGS16S transfers multiple data requests avoiding collisions between network data with increased speed efficiency enhancing network connectivity.

External power supply

The HGS16S comes with an external power supply. Plug the AC Adapter into an empty electrical plug and then plug the power supply into the H-GS8T.

All Ports Capable of Speed & Duplex Negotiation

Each Port on the HGS16S can detect the speed and duplex of the attached network connection.