



## H-FS24T

**(24) 10/100M Auto-negotiation,  
Auto-MDI/MDIX Ports**

**19" 1U Rack Mount**

**Two Year Warranty**

### PACKAGE CONTENTS:

- ◆ One HFS24T 24-Port 10/100M Rack Mount Switch
- ◆ Four Rubber Feet with Adhesive Backing
- ◆ 19" Rack Mount Kit
- ◆ One Power Cord
- ◆ One User's Manual



### Fast and Easy Networking

The Hawking HFS24T is an ideal solution for workgroup and enterprise users, and is designed for easy installation, high performance, and seamless migration between 10Base-T and 100Base-TX network speeds. The switch includes (24) 10/100M auto-negotiation, auto-MDI/MDIX ports and provides a flexible, reliable, and affordable solution for an Ethernet network. Each port delivers up to 200Mbps throughput, which can give workstations a congestion-free data pipe for simultaneous access to the server. The switch can operate in either half or full-duplex modes, and store-and-forward architecture filters eliminate error packets and improve efficiency. In addition, the HFS24T can be expanded by cascading two or more switches together. And the built-in universal power supply lets you easily install the switch without an external power adapter.

### Features

- ◆ (24) 10/100M auto-negotiation, auto-MDI/MDIX Ethernet ports
- ◆ Complies with IEEE 802.3 10Base-T and IEEE 802.3u 100Base-TX standards
- ◆ Supports store-and-forward architecture and performs forwarding and filtering at non-blocking full wire-speed
- ◆ Supports "10/100M" and "Link/Activity" LED modes with "Power" (on) auto diagnostic
- ◆ Supports IEEE 802.3x flow control for full duplex operation
- ◆ Supports back pressure for half duplex operation
- ◆ Supports 8K MAC address entries
- ◆ 320KB buffer memory
- ◆ Built-in universal power supply (100-240V AC)
- ◆ EMI certifications: FCC Class A, CE Mark

### Network Requirements:

- ◆ IEEE 802.3 10Base-T, or 802.3u 100Base-TX Ethernet

# 24-Port 10/100M Rack Mount Switch

CONNECT WHEREVER YOU WANT · WHENEVER YOU WANT

## CAREFREE NETWORKING



## HFS24T

**(24) 10/100M Auto-negotiation,  
Auto-MDI/MDIX Ports**  
**19" 1U Rack Mount**  
**Two Year Warranty**

### SPECIFICATIONS

#### Network Specifications

- IEEE 802.3 10Base-T Ethernet, IEEE 802.3u 100Base-TX Fast Ethernet, IEEE 802.3x Flow Control

#### Ports

- (24) 10/100M Auto-negotiation, Auto-MDI/MDIX ports

#### LED Indicators

- Power Indicator
- (24) 10/100M Indicators
- 24 Link/Activity Indicators

#### Flow Control

- Full Duplex: IEEE 802.3x
- Half Duplex: Back Pressure

#### Switching Scheme

- Store-and-forward

#### Cabling Type

- UTP Category 3 or better (10Base-T)
- UTP Category 5 or better (100Base-TX)

#### MAC Addresses

- Supports 8K MAC addresses

#### Protocols

- CSMA/CD

#### Physical Dimensions

- 13.00" x 9.05" x 1.75" (W x D x H)
- 330mm x 230mm x 44mm (W x D x H)

#### Input Power Specifications

- AC 100-240V, 50-60Hz

#### Operating Temperature

- 0-50°C

#### Operating Humidity

- 5% - 90%, non-condensing

#### EMI Conformance

- FCC Class A
- CE Mark

### HAWKING TECHNOLOGIES, INC

**USA:** Irvine, California

**Website:** www.hawkingtech.com

**Email:** sales@hawkingtech.com

**Tel:** 888.662.8828, 949.580.0888

**Fax:** 949.580.0880

**Europe:** Rotterdam, The Netherlands

**Website:** www.hawkingeurope.com

**Email:** sales@hawkingeurope.com

**Tel:** 31.10.245.1600

**Fax:** 31.10.245.1616

### READY, NETWORK & GO!

#### Step 1 - Power On the Switch

Power on the switch by connecting the power cord.

#### Step 2 - Connect Computers, Servers, etc.

Connect computers, servers, or other appropriate devices to the switch's Ethernet ports.

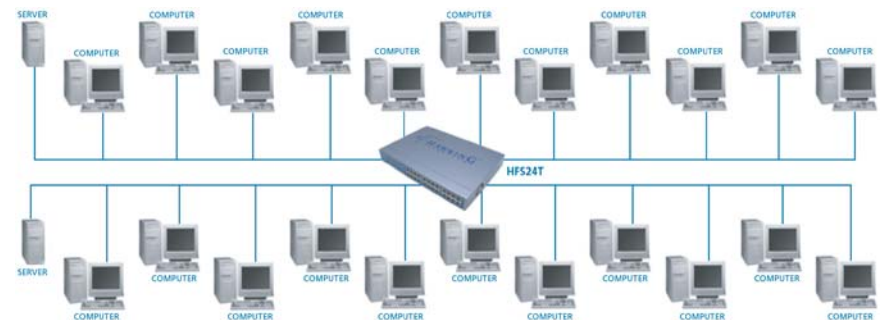
#### Step 3 - Get Started

Power on the attached computers, servers, etc. and you're ready to go!

### ORDERING INFORMATION:

<b>H-GS5T</b>	5-Port 10/100/1000M Gigabit Switch
<b>H-GS8T</b>	8-Port 10/100/1000M Gigabit Switch
<b>HFS16T</b>	16-Port 10/100M Rack Mount Switch
<b>HFS24T</b>	24-Port 10/100M Rack Mount Switch
<b>HGMS224</b>	24-Port 10/100M Layer 2 Managed Switch (Intelligent)
<b>PS12U</b>	2 USB + 1 Parallel Port Internet Print Server

### WIRED NETWORK DIAGRAM:



### Product Features

**24 full-duplex copper 10/100M ports with standard RJ-45 connectors**  
Plug in standard Ethernet cables to the HFS24T's RJ-45 ports.

**10/100Mbps auto-sensing**  
The HFS24T will detect your network speed setting to give you the best possible network performance.

**Auto-MDI/MDIX technology**  
Enables the use of either standard Ethernet cables or crossover cables to connect with other devices.

**Store-and-forward architecture**  
Store-and-forward architecture filters eliminate error packets and improve efficiency.

**Cascading**  
The switch can be expanded by cascading two or more switches together; from any port and to any number of switches.

**Built-in universal power supply**  
Allows for easy installation of the switch without an external power adapter.

**All ports capable of speed & duplex negotiation**  
Each port on the HFS24T can detect the speed and duplex of the attached network connection.